

RESEARCH

Open Access



# Associations between birthweight and preterm birth and the ages at menarche and menopause

Christian Daniele<sup>1</sup>, Rachel E. Wacks<sup>1</sup>, Leslie V. Farland<sup>2</sup>, JoAnn E. Manson<sup>3,4</sup>, Lihong Qi<sup>5</sup>, Aladdin H. Shadyab<sup>6</sup>, Sylvia Wassertheil-Smoller<sup>7</sup> and Cassandra N. Spracklen<sup>1\*</sup>

## Abstract

**Background** Women who reach menarche and menopause at earlier ages have been shown to be at increased risk for numerous conditions including cardiovascular disease, cancer, depression, and obesity; however, risk factors for earlier ages of menarche and menopause are not fully understood. Therefore, we aimed to perform a retrospective investigation of the associations between a personal birthweight and/or being born preterm and the age of and menarche and menopause and related events in the Women's Health Initiative, a large, racially and ethnically diverse cohort of postmenopausal women.

**Methods** At study entry, women reported their birthweight by category (< 6 lbs., 6–7 lbs. 15 oz, 8–9 lbs. 15 oz, or ≥ 10 lbs.) and preterm birth status (4 or more weeks premature). Ages at events related to menarche and menopause were also self-reported. Linear regression and logistic regression models were used to estimate unadjusted and adjusted effect estimates ( $\beta$ ) and odds ratios (OR), respectively ( $n \leq 86,857$ ). Individuals born preterm were excluded from all birthweight analyses.

**Results** After adjustments, individuals born weighing < 6lbs. were more likely to reach natural menopause at an earlier age (adjusted  $\beta = -0.361$ , SE = 0.09,  $P < 0.001$ ) and have a shorter reproductive window (adjusted  $\beta = -0.287$ , SE = 0.10,  $p < 0.004$ ) compared to individuals weighing 6–7 lbs. 15 oz. Individuals born preterm were also more likely to reach natural menopause at an earlier age (adjusted  $\beta = -0.506$ , SE = 0.16,  $P = 0.001$ ) and have a shorter reproductive window (adjusted  $\beta = -0.418$ , SE = 0.17,  $p < 0.006$ ).

**Conclusions** These findings raise concerns that, as more preterm and low birthweight individuals survive to adulthood, the prevalence of earlier-onset menarche and menopause may increase. Clinical counseling and interventions aimed at reducing the incidence of preterm and low birthweight births, as well as intensification of lifestyle modifications to reduce CVD risk among women with these early-life risk factors, should be prioritized.

**Keywords** Birthweight, Preterm birth, Women's health, Menarche, Menopause

\*Correspondence:  
Cassandra N. Spracklen  
cspracklen@umass.edu

Full list of author information is available at the end of the article



© The Author(s) 2024. **Open Access** This article is licensed under a Creative Commons Attribution 4.0 International License, which permits use, sharing, adaptation, distribution and reproduction in any medium or format, as long as you give appropriate credit to the original author(s) and the source, provide a link to the Creative Commons licence, and indicate if changes were made. The images or other third party material in this article are included in the article's Creative Commons licence, unless indicated otherwise in a credit line to the material. If material is not included in the article's Creative Commons licence and your intended use is not permitted by statutory regulation or exceeds the permitted use, you will need to obtain permission directly from the copyright holder. To view a copy of this licence, visit <http://creativecommons.org/licenses/by/4.0/>.

## Introduction

A woman's age at menarche and menopause marks the start and end of her reproductive years, respectively. The timing of these hormonal transition periods is critical for a woman's health trajectory over her lifespan, as they are indicators of ovarian function and aging. A growing body of literature consistently shows that both early and late onset of either event is associated with increased risk for adverse health outcomes. An earlier age of menarche has demonstrated associations with increased risk of breast and endometrial cancers, depression, cardiovascular disease, obesity, and premature death, while later age of menarche is associated with higher risk of depression and lower bone mineral density [1]. Earlier age at menopause has been associated with higher risk of cardiovascular disease, lower bone mineral density, osteoporosis, and premature death; later timing of menopause puts a woman at increased risk for breast and endometrial cancers [1]. Therefore, identifying risk factors for early- and/or late-onset of menarche and menopause might have implications for public health, chronic disease prevention, and improvement in quality of life.

The Developmental Origins of Health and Disease hypothesis, or "Barker hypothesis", postulates that diseases occurring across the lifecourse result from environmental exposures *in utero* and early childhood [2]. The hypothesis has been frequently supported within chronic conditions that affect individuals later in life, such as cardiovascular disease, cancer, disability, thyroid conditions, autoimmune diseases, and type 2 diabetes [3–7]. However, the association of early life exposures, such as birthweight and/or preterm birth, on the development of women's health-related outcomes, including age at menarche and menopause, has been less well studied. At least 13 studies have examined the association between a woman's own birthweight and age at menarche, suggesting those born at higher birthweights reach menarche at a later age [8]. Fewer studies have examined the association between a woman's birthweight and her age at natural menopause, suggesting either no association or that those born at higher birthweights reach menopause at a later age [9–13]. Additionally, the literature examining the timing of menarche and menopause in women born preterm is limited [12, 14–16]. Overall, most of the prior studies were conducted in small samples ( $N < 1,000$ ) and/or the study populations were composed of predominantly White individuals from Europe or Australia. Therefore, the goal of our study was to investigate the association between an individual's birthweight and gestational age at delivery and ages at menarche and menopause and related events among participants in the Women's Health Initiative (WHI).

## Methods

### Study population

An ongoing prospective cohort study, the Women's Health Initiative (WHI), was designed to examine socio-demographic, behavioral, and clinical risk factors for several disease outcomes in post-menopausal women. At enrollment, 161,608 post-menopausal women between ages 50 and 79 in the United States were recruited from the general population at 40 clinical recruitment sites between 1993 and 1998 [17, 18]. Participants were given the opportunity to enroll into overlapping clinical trials (WHI-CT;  $n=67,932$ ) or a long-term observational study (WHI-OS;  $n=93,676$ ). Further details on study design, recruitment, and implementation have been described elsewhere [17]. The Institutional Review Board of each precipitating recruitment site approved all study protocols, and all participants provided written, informed consent at study commencement.

### Baseline measures

Upon enrollment, women in the WHI-OS completed structured, self-administered, baseline surveys that gathered demographic, lifestyle, medical, reproductive, and family history information. Participants reported their birthweight as one of the following: <6 pounds (lbs.), 6 lbs. to 7 lbs. 15 ounces (oz.), 8 lbs. to 9 lbs. 15 oz., and  $\geq 10$  lbs. Validation of the collection of birthweight by category has been previously validated (Spearman  $r=0.67-0.75$ ) [19, 20]. Women were also asked to report if they were born preterm through the following question: "When you were born, were you: full term, 4 or more weeks premature, don't know?" (Supplementary Table S1). Women also reported if they were part of a multiple pregnancy (e.g., a twin or triplet). Physical assessments to collect accurate anthropometric and other clinical measures were also performed at baseline by trained clinical staff.

### Outcome definitions and measurement

Questionnaires self-administered at baseline were used to obtain data on relevant health outcomes (Supplementary Table S1). At baseline, women were asked to report their age at menarche, as well as the ages they experienced their first regular period, last regular period, last vaginal bleeding, and menopause (further described below). Women were also asked whether they had ever had an oophorectomy (yes/no), or hysterectomy (yes/no); if yes, they were then asked at what age ( $< 30$  to  $\geq 60$ , in categories with 5-year increments). Additionally, women were asked if they ever had regular periods, premenstrual hot flashes, or postmenopausal hot flashes (yes/no). The reproductive window was calculated by subtracting the reported age of menarche from the age at natural menopause.

To be comparable to prior published literature, we restricted our menopause analyses (age at menopause, age at last vaginal bleeding, and age at last regular period) to women who experienced natural menopause. To define the age at natural menopause, we started with the primary age at menopause variable, as defined by WHI's algorithm [21], which briefly defines a woman's age at menopause as the age she first experienced any of the following: last time they had any menstrual bleeding, had a bilateral oophorectomy, or began using hormone replacement therapy. However, we further excluded participants who reported: (1) a history of bilateral oophorectomy at an age before their reported age at menopause; (2) a history of having an oophorectomy at an age before their reported age at menopause but did not know if it was unilateral or bilateral; or (3) had an unknown oophorectomy status. A second, more conservative age at natural menopause variable was used in sensitivity analyses, and further removed participants who reported having a hysterectomy prior to their age at menopause or an unknown hysterectomy status.

#### Exclusion criteria

Participants were excluded from all analyses if they were reported being a twin or triplet ( $n=1,939$ ) or if they were missing both birthweight information and premature birth status information ( $n=2,924$ ). Participants born  $\geq 4$  weeks premature were excluded from birthweight analyses ( $n=2,042$ ). Women who did not experience natural menopause were excluded from menopause-related analyses in both birthweight ( $n=16,692$ ) and preterm birth ( $n=17,488$ ) analyses. The final maximal sample size for the preterm birth analyses was  $n=86,925$  and the final maximal sample size for birthweight analyses was  $n=76,028$  (Fig. 1).

#### Statistical analyses

Birthweight category (<6 lbs., 6 lbs. to 7 lbs. 15 oz., 8 lbs. to 9 lbs. 15 oz., and  $\geq 10$  lbs.) and preterm birth status ( $\geq 4$  weeks premature or full term) were used to examine baseline characteristics of study participants. For both analyses, categorical variables were examined using chi-square tests. Continuous variables were examined for using t-tests for preterm birth analyses and ANOVAs for birthweight analyses. Linear regression models were used to generate estimates between a participant's birthweight or preterm birth status with their age at events related to menarche and menopause. Logistic regression models were used to estimate odds ratios (OR) and 95% confidence intervals (95% CI) between a woman's preterm birth status or birthweight and regular periods, pre- and postmenopausal hot flashes, oophorectomy, and hysterectomy. The referent category for birthweight analyses was 6 lbs. to 7 lbs. 15 oz., as infants born full

term and within this weight range are considered to be of normal weight. Full term was used as the referent category in preterm birth analyses. Covariates for model inclusion included age (continuous), race (categorical; Asian/Pacific Islander, Black, White, Other/Unknown), ethnicity (categorical; Hispanic/Latinx or non-Hispanic/Latinx), region (categorical), normalized neighborhood socio-economic status (NSES, continuous) [22], education (categorical;  $\leq$  high school diploma/GED, school after high school, college degree or higher), baseline body mass index (BMI, continuous), smoking status (categorical; never, past, current), and alcohol use (categorical; non-drinker, past drinker, current drinker). Whether or not the participant was breast fed was also explored as a potential covariate; however, all effect estimates were unchanged in the analyses when added to the models and it was removed. We also stratified our results by race or ethnicity and provide the results in the supplementary materials; however, analyses of individuals who identify as non-White and Hispanic/Latinx are too underpowered to draw any conclusions. Further, we performed sensitivity analyses stratified by age group at enrollment for consideration of results among those who more recently experienced the hormonal transitional period.

In the field of life-course epidemiology, there is some controversy as to whether or not adult lifestyle factors (e.g., BMI) should be included as model covariates [23]. As such, we present our results unadjusted, partially adjusted for demographic factors, and fully adjusted for demographic and lifestyle factors that may have occurred temporally after our exposure. Furthermore, we did not include birthweight as a covariate in preterm birth analyses, as birthweight and gestational age are strongly correlated and would have potentially adjusted away part or all of the association between preterm birth and the outcomes of interest. Instead, results are presented stratified by birthweight category to allow for a more direct comparisons of disease risk among women born in similar birthweights; this also allows for examination of preterm birth analyses among those individuals most likely born preterm. All statistical tests were two-sided, with P-values  $< 0.05$  being considered statistically significant. All analyses were performed using R (Version 4.1.2).

## Results

### Birthweight

Baseline characteristics of participants stratified by birthweight category are shown in Table 1. Within the final study sample, 9.1%, 67.4%, 20.0%, and 3.4% of participants were reportedly born within the <6 lbs., 6 lbs.-7 lbs. 15 oz., 8 lbs. – 9 lbs. 15 oz., or  $\geq 10$  lbs. categories, respectively. The average ages at menarche, natural menopause, and natural menopause (conservative) for the entire study population was 12.2, 49.0, and 49.1 years.

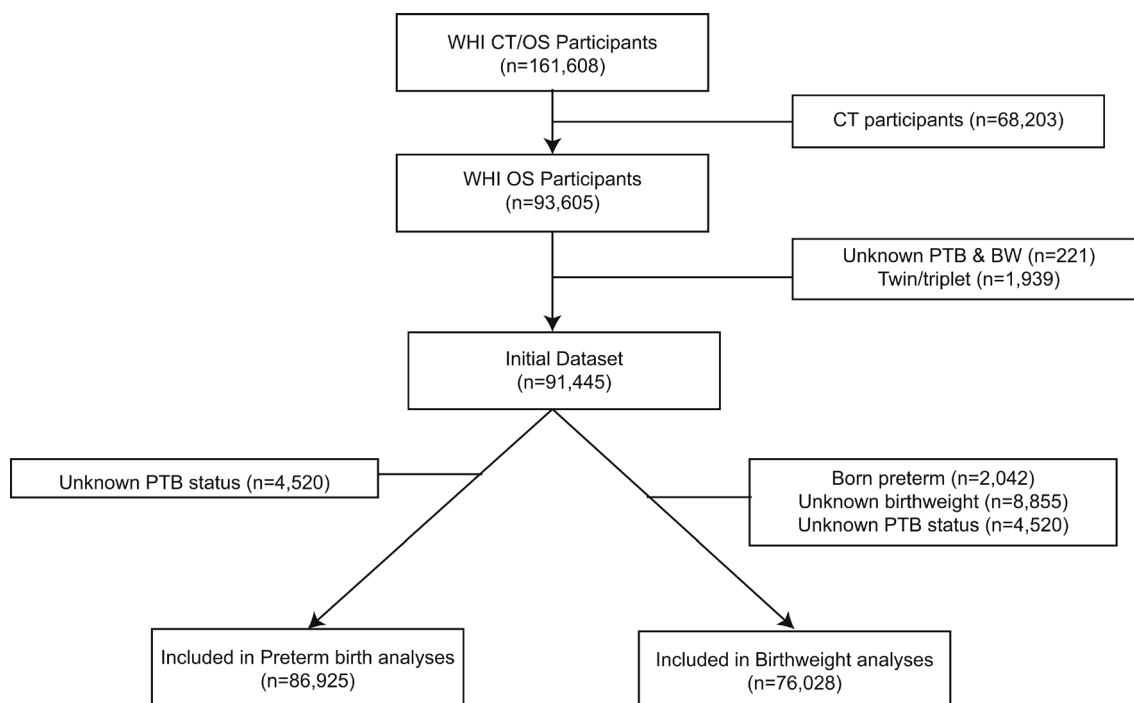
**Table 1** Baseline characteristics of 78,028 WHI study participants by birth weight category

		Birth weight category				P <sup>a</sup>
		< 6 lbs. N = 7,096	6 lbs.–7 lbs. 15 oz. N = 52,661	8 lbs.–9 lbs. 15 oz. N = 15,591	≥ 10 lbs. N = 2,680	
Age at baseline (years)		63.1 (7.5)	63.3 (7.3)	63.4 (7.3)	65.0 (7.0)	< 0.0001
Race						
	Asian/Pacific Islander	348 (5.0)	1,349 (2.6)	171 (1.1)	21 (0.8)	< 0.0001
	Black	710 (10.3)	3,930 (7.6)	866 (5.7)	161 (6.1)	
	White	5,725 (83.0)	45,682 (88.5)	14,081 (91.9)	2,409 (91.6)	
	Other/Unknown	115 (1.7)	674 (1.3)	199 (1.3)	39 (1.5)	
Ethnicity						
	Hispanic/Latinx	363 (5.2)	2,096 (4.0)	509 (3.3)	84 (3.2)	< 0.0001
	Not Hispanic/Latinx	6,620 (94.8)	50,101 (96.0)	14,976 (96.7)	2,574 (96.8)	
Region						
	Northeast	1,518 (21.4)	11,977 (22.7)	3,424 (22.0)	572 (21.3)	< 0.0001
	South	1,928 (27.2)	13,452 (25.5)	3,979 (25.5)	692 (25.8)	
	Midwest	1,516 (21.4)	3,979 (25.5)	3,638 (23.3)	642 (24.0)	
	West	2,134 (30.1)	692 (25.8)	4,550 (29.2)	774 (28.9)	
Education						
	≤ High school diploma/GED	1,642 (23.4)	10,423 (19.9)	2,981 (19.3)	664 (25.1)	< 0.0001
	School after high school	2,687 (38.3)	18,987 (36.3)	5,748 (37.2)	1,071 (40.4)	
	College degree or higher	2,695 (38.4)	22,875 (43.8)	6,735 (43.6)	916 (34.6)	
Normalized Socioeconomic Status (NSES)		75.3 (9.0)	76.2 (8.4)	76.4 (8.0)	75.4 (8.3)	< 0.0001
BMI at baseline (kg/m <sup>2</sup> )		27.3 (6.0)	27.0 (5.7)	27.7 (6.1)	28.6 (6.6)	< 0.0001
Smoking status						
	Never	3,705 (53.0)	26,268 (50.5)	7,500 (48.7)	1,304 (49.4)	< 0.0001
	Past	2,793 (40.0)	22,517 (43.3)	6,894 (44.8)	1,163 (44.1)	
	Current	493 (7.1)	3,195 (6.1)	1,003 (6.5)	173 (6.6)	
Alcohol Use						
	Non-drinker	933 (13.2)	5,459 (10.4)	1,513 (9.8)	321 (12.1)	< 0.0001
	Past drinker	1,484 (21.1)	9,418 (18.0)	2,827 (18.3)	551 (20.7)	
	Current drinker	4,628 (65.7)	37,466 (71.6)	11,153 (72.0)	1,787 (67.2)	
Participant breastfed						
	Yes	3,832 (67.4)	30,743 (72.7)	10,177 (77.2)	1,853 (82.3)	< 0.0001
	No	1,856 (32.6)	11,551 (27.3)	3,009 (22.8)	400 (17.8)	
Age at menarche (years)						
	≤ 11	1,701 (24.1)	11,538 (22.0)	3,517 (22.6)	637 (23.9)	< 0.0001
	12	1,816 (25.7)	13,813 (26.3)	4,029 (25.9)	670 (25.1)	
	13	1,916 (27.1)	15,466 (29.5)	4,526 (29.1)	713 (26.7)	
	14	1,635 (23.1)	11,628 (22.2)	3,469 (22.3)	646 (24.2)	
Age at first regular period (years)						
	≤ 11	908 (15.4)	6,034 (13.7)	1,920 (14.7)	351 (16.1)	< 0.0001
	12	1,242 (21.1)	9,125 (20.7)	2,719 (20.8)	444 (20.3)	
	13	1,405 (23.8)	11,598 (26.3)	3,395 (25.9)	555 (25.4)	
	≥ 14	2,343 (39.7)	17,351 (39.3)	5,063 (38.7)	836 (38.2)	
Reproductive window (years)		36.1 (6.4)	36.6 (5.9)	36.6 (5.9)	36.1 (6.4)	< 0.0001
Age at last regular period (years)		46.9 (6.9)	47.5 (6.6)	47.5 (6.6)	47.4 (6.8)	< 0.0001
Age at last vaginal bleeding (years)		47.8 (7.5)	48.5 (7.3)	48.5 (7.3)	48.3 (7.4)	< 0.0001
Age at natural menopause (years)		48.6 (6.2)	49.1 (5.8)	49.2 (5.8)	48.8 (6.2)	< 0.0001
Were periods regular						
	Yes	5,663 (80.4)	43,395 (82.9)	12,736 (82.3)	2,139 (80.5)	< 0.0001
	No	1,384 (19.6)	8,978 (17.1)	2,743 (17.7)	519 (19.5)	
Ever had a hysterectomy						
	Yes	3,117 (44.0)	21,545 (41.0)	6,521 (41.9)	1,240 (46.3)	< 0.0001
	No	3,974 (56.0)	31,068 (56.0)	9,054 (58.1)	1,438 (53.7)	

**Table 1** (continued)

	Birth weight category				P <sup>a</sup>
	< 6 lbs. N = 7,096	6 lbs.–7 lbs. 15 oz. N = 52,661	8 lbs.–9 lbs. 15 oz. N = 15,591	≥ 10 lbs. N = 2,680	
Ever had an oophorectomy					
Yes	2,200 (31.5)	14,921 (28.7)	4,528 (29.4)	848 (32.2)	< 0.0001
No	4,791 (68.5)	37,057 (71.3)	10,889 (70.6)	1,788 (67.8)	
Ever had premenopausal hot flashes					
Yes	5,857 (82.6)	43,902 (83.4)	13,064 (83.9)	2,242 (83.8)	0.10
No	1,236 (17.4)	8,717 (16.6)	2,511 (16.1)	435 (16.3)	
Ever had postmenopausal hot flashes					
Yes	2,355 (49.4)	17,531 (49.4)	5,171 (49.1)	882 (48.0)	0.61
No	2,417 (50.7)	17,928 (50.6)	5,366 (50.9)	957 (52.0)	

Numbers are N (%) for categorical variables and mean (STD) for continuous variables. <sup>a</sup>P values are from ANOVA and chi-square statistics and compare groups across birth weight categories



**Fig. 1** Flow chart for inclusion

Participants who reported weighing  $\geq 10$  lbs. at birth were more likely to be older and have a higher BMI at baseline. They were also more likely to report being breast fed as an infant, have a hysterectomy prior to enrollment, and experience postmenopausal hot flashes. Individuals who reported weighing  $< 6$  lbs. at birth were more likely to be younger at baseline, identify as Black or Hispanic/Latinx, and identify as a never-smoker and/or non-drinker at enrollment.

Table 2 shows the crude and adjusted estimates for the associations between birthweight and age at menarche and menopause. After adjustment for demographic and lifestyle, participants born weighing  $< 6$  lbs. reached natural menopause at an earlier age compared to those born

weighing 6 lbs. – 7 lbs. 15 oz in models using the standard ( $\text{adj}\beta = -0.350, p < 0.0001$ ; 4.3 months) and conservative ( $\text{adj}\beta = -0.317, p < 0.0001$ ; 3.9 months) definitions of natural menopause. Being born weighing  $< 6$  lbs. was also associated with a shorter reproductive window compared to those born weighing 6 lbs. – 7 lbs. 15 oz ( $\text{adj}\beta = -0.287, p = 0.004$ ; 3.5 months). We also observed individuals born weighing  $< 6$  lbs. having a lower age at menarche ( $\text{adj}\beta = -0.047, p = 0.02$ ; 0.56 months). Individuals born weighing  $\geq 10$  lbs. were also more likely to experience an earlier age at menopause with both definitions and have a shorter reproductive window, but the significant associations were attenuated in the fully adjusted models.

**Table 2** Results from linear regression analyses for the associations between birthweight and age at events related to menarche and menopause

	Birth weight category				Global P
	$\beta$ (SE)	P			
	< 6 lbs. N = 7,096	6 lbs.–7 lbs. 15 oz. N = 52,661	8 lbs.–9 lbs. 15 oz. N = 15,591	$\geq$ 10 lbs. N = 2,680	
<i>Menarche-related</i>					
Age at menarche					
Unadjusted (n=77,720)	-0.041 (0.02) 0.03	Ref	-0.023 (0.01) 0.09	0.023 (0.03) 0.42	0.049
Adj. for demographics (n=74,840)	-0.044 (0.02) 0.02	Ref	0.005 (0.01) 0.72	0.046 (0.03) 0.12	< 0.0001
Adj. for demographic and lifestyle factors (n=65,447)	-0.047 (0.02) 0.02	Ref	-0.003 (0.01) 0.82	0.032 (0.03) 0.31	< 0.0001
Age at first regular period					
Unadjusted (n=65,289)	-0.026 (0.03) 0.31	Ref	-0.043 (0.02) 0.02	-0.050 (0.04) 0.21	0.07
Adj. for demographics (n=62,910)	-0.016 (0.03) 0.54	Ref	-0.017 (0.02) 0.36	-0.011 (0.04) 0.79	< 0.0001
Adj. for demographic and lifestyle factors (n=55,274)	-0.011 (0.03) 0.68	Ref	-0.016 (0.02) 0.42	-0.026 (0.04) 0.54	< 0.0001
<i>Reproductive window</i>					
Reproductive window (years)					
Unadjusted (n=54,348)	-0.455 (0.09) < 0.0001	Ref	0.058 (0.07) 0.37	-0.409 (0.14) 0.004	< 0.0001
Adj. for demographics (n=52,445)	-0.403 (0.09) < 0.0001	Ref	0.034 (0.07) 0.61	-0.466 (0.14) 0.001	< 0.0001
Adj. for demographic and lifestyle factors (n=46,036)	-0.287 (0.10) 0.004	Ref	0.029 (0.07) 0.67	-0.283 (0.15) 0.06	< 0.0001
<i>Menopause-related</i>					
Age at last regular period					
Unadjusted (n=70,263)	-0.585 (0.09) < 0.0001	Ref	0.042 (0.06) 0.51	-0.135 (0.14) 0.33	< 0.0001
Adj. for demographics (n=67,805)	-0.528 (0.09) < 0.0001	Ref	0.036 (0.06) 0.57	-0.217 (0.14) 0.12	< 0.0001
Adj. for demographic and lifestyle factors (n=59,460)	-0.445 (0.09) < 0.0001	Ref	0.063 (0.07) 0.35	-0.083 (0.15) 0.57	< 0.0001
Age at last vaginal bleeding					
Unadjusted (n=71,538)	-0.717 (0.10) < 0.0001	Ref	0.034 (0.07) 0.62	-0.214 (0.15) 0.16	< 0.0001
Adj. for demographics (n=69,009)	-0.631 (0.10) < 0.0001	Ref	0.027 (0.07) 0.70	-0.311 (0.15) 0.04	< 0.0001
Adj. for demographic and lifestyle factors (n=60,492)	-0.524 (0.10) < 0.0001	Ref	0.048 (0.07) 0.52	-0.151 (0.16) 0.35	< 0.0001
Age at natural menopause					
Unadjusted (n=62,015)	-0.494 (0.08) < 0.0001	Ref	0.060 (0.06) 0.32	-0.308 (0.13) 0.02	< 0.0001
Adj. for demographics (n=59,822)	-0.450 (0.09) < 0.0001	Ref	0.060 (0.06) 0.32	-0.342 (0.13) 0.01	< 0.0001
Adj. for demographic and lifestyle factors (n=52,416)	-0.350 (0.09) < 0.0001	Ref	0.059 (0.06) 0.35	-0.159 (0.14) 0.25	< 0.0001
Age at natural menopause (conservative)					
Unadjusted (n=54,413)	-0.478 (0.09) < 0.0001	Ref	0.041 (0.06) 0.52	-0.361 (0.14) 0.01	< 0.0001

**Table 2** (continued)

	Birth weight category				Global P
	$\beta$ (SE)	$P$			
	< 6 lbs. N = 7,096	6 lbs.–7 lbs. 15 oz. N = 52,661	8 lbs.–9 lbs. 15 oz. N = 15,591	$\geq$ 10 lbs. N = 2,680	
Adj. for demographics (n=52,506)	-0.432 (0.09)	Ref	0.043 (0.06)	-0.391 (0.14)	< 0.0001
	< 0.0001		0.50	0.01	
Adj. for demographic and lifestyle factors (n=46,084)	-0.317 (0.10)	Ref	0.035 (0.07)	-0.219 (0.15)	< 0.0001
	0.001		0.61	0.14	

Results presented as beta (standard error) and p-value. Global P-value is testing for a linear trend. Demographic factors include age, race, ethnicity, region, and BMI. Lifestyle factors include smoking status, education, normalized socioeconomic status (NSES), and alcohol use. For the age at natural menopause analyses, participants were removed if they reported: having a bilateral oophorectomy prior to menopause; having an oophorectomy prior to menopause but did not know if it was unilateral or bilateral; or if they had an unknown oophorectomy status. For the conservative age at natural menopause, participants were also removed if they reported having a hysterectomy prior to menopause or had an unknown hysterectomy status

Results stratified by age, race, and ethnicity are shown in Supplementary Tables 2 and 3.

Table 3 shows the unadjusted and demographic- and lifestyle-adjusted odds ratios for events related to menarche and menopause by category of birthweight. Compared to those born weighing 6 lbs-7 lbs. 15 oz, participants born weighing <6 lbs. and those born weighing  $\geq$ 10 lbs. were significantly less likely to report having regular menstrual periods (<6 lbs: adjOR=0.84, 95% CI 0.78–0.90;  $\geq$ 10 lbs.: adjOR=0.86, 95% CI 0.77–0.96). Furthermore, participants born weighing <6 lbs. and  $\geq$ 10 lbs. had significantly higher odds of reporting a prior oophorectomy (<6 lbs.: adjOR=1.14, 95% CI 1.07–1.21;  $\geq$ 10 lbs.: adjOR=1.13, 95% CI 1.03–1.24) and hysterectomy (<6 lbs.: adjOR=1.11, 95% CI 1.05–1.18;  $\geq$ 10 lbs.: adjOR=1.15, 95% CI 1.05–1.25) at study enrollment, compared to those born weighing 6 lbs-7 lbs. 15 oz. Results stratified by age, race, and ethnicity are shown in Supplementary Tables 4 and 5.

### Preterm Birth

Baseline characteristics of participants stratified by preterm birth status are shown in Table 4. Within the final study sample, 2.3% of participants were reportedly born 4 or more weeks preterm. At enrollment, participants who reported being born preterm were more likely to be younger and have a higher BMI. They were also more likely to identify as White, identify as Not Hispanic/Latinx, have a college degree or higher, weigh less than 6 lbs. at birth, be formula fed as an infant, have had an oophorectomy, and report a younger age at menopause and last regular period.

Table 5 shows the crude and adjusted estimates for the associations between a participant's preterm birth status and continuous variables related to menarche and menopause. Preterm birth was not associated with an earlier age at menarche (adj $\beta$  = -0.031,  $p=0.23$ ). When compared to participants born full term, individuals born preterm experienced a shorter reproductive window (adj $\beta$  = -0.418,  $p=0.006$ ; 5.1 months), earlier natural

menopause (adj $\beta$  = -0.506,  $p=0.001$ ; 6.2 months), had their last regular period earlier (adj $\beta$  = -0.397,  $p=0.02$ ; 4.9 months), experienced their last vaginal bleeding earlier (adj $\beta$  = -0.435,  $p=0.02$ ; 5.3 months), and had a shorter reproductive window (adj $\beta$  = -0.418,  $p=0.006$ ; 5.1 months). However, when restricted to participants born weighing <6 lbs. (those individuals representing the most likely preterm individuals), there were no associations between preterm birth status and any of continuous variables related to menarche and menopause (Supplemental Table 6), suggesting that the birthweight category is a likely mediator in the observed associations with preterm birth status. Results stratified by age, race, and ethnicity are shown in Supplementary Tables 7 and 8.

Table 6 shows the odds ratios for events related to menarche and menopause by participant preterm birth status. Individuals born preterm had lower odds of having regular periods (adjOR=0.81, 95% CI 0.72–0.92) compared to those born full term. Additionally, individuals born preterm had higher odds of having an oophorectomy prior to study enrollment (adjOR=1.13, 95% CI 1.01–1.25) compared to those born full term. No associations were observed between preterm birth status and the odds of having a hysterectomy prior to enrollment, premenopausal hot flashes, or postmenopausal hot flashes. Importantly, when limiting analyses to women born in the lowest birthweight category (<6 lbs.), no associations were observed for any of the outcomes (Supplemental Table 9), suggesting that the birthweight category is a likely mediator in the observed associations with preterm birth status and regular periods and oophorectomy prior enrollment. Results stratified by age, race, and ethnicity are shown in Supplementary Tables 10 and 11.

### Discussion

Our study of postmenopausal women from the WHI identified several meaningful associations between an individual's birthweight and preterm birth status with outcomes relating to menarche and menopause. Individuals born weighing <6 lbs. were more likely to have

**Table 3** Results from logistic regression analyses for the associations between birthweight and events related to menarche and menopause

	Birth weight category				Global P
	OR (95% CI)				
	P				
	< 6 lbs. N = 7,093	6 lbs.–7 lbs. 15 oz. N = 52,619	8 lbs.–9 lbs. 15 oz. N = 15,575	≥ 10 lbs. N = 2,677	
<i>Menarche-related</i>					
Were periods regular					
Unadjusted (n=77,584)	0.85 (0.80-0.90) < 0.0001	1.00 (Ref)	0.96 (0.92-1.01) 0.11	0.85 (0.77-0.94) 0.002	< 0.001
Adj. for demographics (n=74,707)	0.84 (0.79-0.90) < 0.0001	1.00 (Ref)	0.97 (0.92-1.02) 0.18	0.85 (0.77-0.94) 0.002	< 0.001
Adj. for demographic and lifestyle factors (n=65,332)	0.84 (0.78-0.90) < 0.0001	1.00 (Ref)	0.97 (0.92-1.02) 0.24	0.86 (0.77-0.96) 0.007	< 0.001
<i>Menopause-related</i>					
Ever had premenopausal hot flashes					
Unadjusted (n=77,964)	0.94 (0.88-1.01) 0.07	1.00 (Ref)	1.03 (0.98-1.08) 0.19	1.02 (0.92-1.14) 0.67	0.10
Adj. for demographics (n=75,069)	0.95 (0.89-1.02) 0.13	1.00 (Ref)	1.03 (0.98-1.08) 0.27	0.99 (0.89-1.10) 0.79	< 0.0001
Adj. for demographic and lifestyle factors (n=65,601)	0.96 (0.89-1.03) 0.27	1.00 (Ref)	1.02 (0.97-1.08) 0.47	1.03 (0.92-1.16) 0.61	< 0.0001
Ever had postmenopausal hot flashes					
Unadjusted (n=52,607)	1.00 (0.94-1.06) 0.91	1.00 (Ref)	0.99 (0.94-1.03) 0.51	0.94 (0.86-1.04) 0.22	0.61
Adj. for demographics (n=50,673)	1.00 (0.94-1.07) 0.99	1.00 (Ref)	0.98 (0.94-1.02) 0.36	1.00 (0.90-1.10) 0.92	0.83
Adj. for demographic and lifestyle factors (n=44,300)	1.00 (0.94-1.07) 0.97	1.00 (Ref)	0.99 (0.94-1.04) 0.57	0.98 (0.88-1.08) 0.63	0.92
Ever had an oophorectomy					
Unadjusted (n=77,022)	1.14 (1.08-1.20) < 0.0001	1.00 (Ref)	1.03 (0.99-1.07) 0.11	1.18 (1.08-1.28) 0.0001	< 0.0001
Adj. for demographics (n=74,190)	1.15 (1.08-1.21) < 0.0001	1.00 (Ref)	1.02 (0.98-1.07) 0.25	1.13 (1.03-1.23) 0.007	< 0.0001
Adj. for demographic and lifestyle factors (n=64,888)	1.14 (1.07-1.21) < 0.0001	1.00 (Ref)	1.03 (0.98-1.07) 0.25	1.13 (1.03-1.24) 0.008	< 0.0001
Ever had a hysterectomy					
Unadjusted (n=77,957)	1.13 (1.08-1.19) < 0.0001	1.00 (Ref)	1.04 (1.00-1.08) 0.04	1.24 (1.15-1.34) < 0.0001	< 0.0001
Adj. for demographics (n=75,067)	1.13 (1.08-1.19) < 0.0001	1.00 (Ref)	1.03 (0.99-1.07) 0.18	1.17 (1.08-1.26) 0.0002	< 0.0001
Adj. for demographic and lifestyle factors (n=65,558)	1.11 (1.05-1.18) 0.0002	1.00 (Ref)	1.02 (0.98-1.06) 0.28	1.15 (1.05-1.25) 0.002	< 0.0001

Results presented as odds ratio (95% confidence interval) and p-value. Demographic factors include age, race, ethnicity, region, and BMI. Lifestyle factors include smoking status, education, normalized socioeconomic status (NSES), and alcohol use

an earlier age at natural menopause when compared to normal birthweight; have a shorter reproductive window; experience irregular periods; and report an oophorectomy and/or hysterectomy prior to enrollment. Further, our results suggest a non-linear relationship between birthweight and age at natural menopause, where those born within the highest and lowest birthweight categories are more likely to experience an earlier age at natural menopause. Women born prematurely were more likely

to experience natural menopause at an earlier age and with an overall shorter reproductive window.

The observed association between lower birthweight and earlier age of menarche and menopause has previously been reported. In a systematic review, 10/13 studies (76.9%) observed a statistically significant association between being born at lower birthweights and earlier menarcheal age; all studies included adjustment for potential confounders [8]. Similar to our study, two of the



**Table 4** Baseline characteristics of 86,925 WHI study participants by preterm birth status

	Preterm birth N = 2,042	Full term N = 84,883	P <sup>a</sup>
Age at baseline (years)	62.0 (7.3)	63.5 (7.4)	< 0.0001
Race			
Asian/Pacific Islander	44 (2.2)	2,327 (2.8)	0.43
Black	162 (8.1)	6,621 (8.0)	
White	1,770 (88.4)	72,954 (87.9)	
Other/Unknown	26 (1.3)	1,135 (1.4)	
Ethnicity			
Hispanic/Latinx	83 (4.1)	3,588 (4.3)	0.71
Not Hispanic/Latinx	1,941 (95.9)	80,472 (95.7)	
Region			
Northeast	425 (20.8)	19,296 (22.7)	0.23
South	548 (26.8)	22,004 (25.9)	
Midwest	462 (22.6)	18,788 (22.1)	
West	607 (29.7)	24,795 (29.2)	
Education			
≤ High school diploma/GED	363 (17.9)	17,715 (21.0)	0.002
School after high school	744 (36.7)	30,679 (36.4)	
College degree or higher	918 (45.3)	35,820 (42.5)	
Normalized Socioeconomic Status (NSES)	75.8 (8.2)	76.0 (8.6)	0.26
BMI at baseline (kg/m <sup>2</sup> )	27.7 (6.1)	27.2 (5.9)	0.0001
Smoking status			
Never	1,039 (51.6)	42,422 (50.6)	0.09
Past	828 (41.2)	36,110 (43.1)	
Current	145 (7.2)	5,246 (6.3)	
Alcohol Use			
Non-drinker	218 (10.7)	9,316 (11.1)	0.31
Past drinker	406 (20.0)	15,709 (18.6)	
Current drinker	1,410 (69.3)	59,310 (70.3)	
Participant breast fed			
Yes	882 (53.6)	50,863 (74.4)	< 0.0001
No	765 (46.5)	17,513 (25.6)	
Birthweight			
< 6 lbs.	1,687 (84.6)	6,359 (8.4)	< 0.001
6 lbs. – 7 lbs. 15 oz.	277 (13.9)	51,728 (67.9)	
8 lbs. – 9 lbs. 15 oz.	29 (1.5)	15,414 (20.2)	
≥ 10 lbs.	< 20 (<1.0)	2,638 (3.5)	
Age at menarche (years)			
≤ 11	502 (24.7)	18,646 (22.1)	0.03
12	527 (25.9)	22,112 (26.2)	
13	551 (27.1)	24,571 (29.1)	
14	452 (22.2)	19,214 (22.7)	
Age at first regular period (years)			
≤ 11	253 (15.3)	9,903 (14.0)	0.46
12	343 (20.8)	14,742 (20.8)	
13	424 (25.7)	18,418 (26.0)	
14	633 (38.3)	27,900 (39.3)	
Age at last regular period (years)	46.8 (6.8)	47.5 (6.6)	< 0.0001
Age at last vaginal bleeding (years)	47.7 (7.6)	48.4 (7.3)	< 0.0001
Were periods regular			
Yes	1,599 (78.9)	69,651 (82.5)	< 0.0001
No	427 (21.1)	14,730 (17.5)	
Ever had a hysterectomy			

**Table 4** (continued)

	Preterm birth N = 2,042	Full term N = 84,883	P <sup>a</sup>
Ever had an oophorectomy			
Yes	889 (43.6)	35,297 (41.6)	0.08
No	1,151 (56.4)	49,512 (58.4)	
Age at natural menopause (years)			
Yes	644 (31.9)	24,483 (29.2)	0.009
No	1,373 (68.1)	59,269 (70.8)	
Ever had premenopausal hot flashes			
Yes	48.4 (6.3)	49.1 (5.9)	< 0.0001
No			
Ever had postmenopausal hot flashes			
Yes	1,682 (82.4)	70,802 (83.5)	0.18
No	360 (17.6)	14,013 (16.5)	
Reproductive window (years)			
Yes	687 (51.4)	28,807 (49.0)	0.09
No	651 (48.7)	29,296 (51.1)	
	35.9 (6.3)	36.5 (6.0)	< 0.0001

Numbers are N (%) for categorical variables and mean (STD) for continuous variables. <sup>a</sup>P values are from ANOVA and chi-square statistics and compare groups across birth weight categories. Policy from the Women's Health Initiative will not allow researchers to report the number of participants in cells with fewer than 20 individuals. As such, cells that contain fewer than 20 participants read "<20"

four previous studies that also excluded individuals born preterm identified earlier ages of menarche among those born in the lowest birthweight quintile ( $p$  for trend=0.03) [24] or <3,000 g ( $\beta = -0.68$ ,  $p=0.02$ ) [25]. A similar number of studies have examined the association between birthweight and age at menopause; the majority did not observe a significant relationship [26]. However, most of the studies were very small ( $151 < N < 1,583$ ), which could explain the null findings [26]. One study that was the most similar in design to ours, conducted in the Nurses' Health Study II cohort, included data from >106,000 US-based participants. Results from this study demonstrated an increased risk of early natural menopause among women born weighing <5 lbs. 8 oz. (HR 1.21, 95% CI 1.01–1.45 in fully adjusted model) [27], consistent with our results. Future research in other diverse, non-US based populations is needed to confirm the observed relationships.

The prior literature examining the association between being born preterm and age of menarche are limited and inconsistent. There have been at least 13 studies that have previously considered the association between gestational age or being born preterm and age of menarche: 5 found preterm birth to be associated with earlier age of menarche and 8 found no association [28]. Among the four studies performed after the majority of the participants would have been expected to attain menarche (age > 15) [29–32], only one found individuals born preterm to achieve menarche earlier (beta=0.07 years;  $N=76,720$ ; France) [30]. The remaining studies had a much smaller sample size ( $403 < N < 18,132$ ). However, in our study of over 86,000 participants, we did not observe an association between preterm birth and age of menarche.

To our knowledge, only three studies have examined the association between preterm birth and age at menopause [16, 27, 33]. Specifically, two studies demonstrated preterm birth to be significantly associated with premature ovarian insufficiency [16, 33]. The third study from the Nurses' Health Study II cohort found no association between preterm birth and age at natural menopause (OR 0.98, 95% CI 0.82–1.16) [27]. We are the first study to find an association between being born preterm and age at menopause. However, because our results were attenuated in models restricted to individuals who also reported weighing <6 lbs. at birth, additional research in other populations would be needed to confirm the association in a dataset that does not rely on self-reported exposures.

Low birth weight, an established marker of poor infant health and/or nutrition [34], is thought to impact the age of menarche through alterations in the hypothalamic-pituitary-gonadal (HPG) axis. The HPG axis, which controls pubertal development [35], is established early in fetal development and remains active throughout pregnancy and through the first year of life [36, 37]. The HPG axis is then reactivated at pubertal onset [36, 37]. A poor intrauterine environment, caused by stress and/or inadequate nutrition, may cause fetal (FGR) or intrauterine (IUGR) growth restriction [8], which has been suggested to impact epigenetic programming [38, 39], including the development of the HPG axis and its reactivation at puberty [35]. Further, infants with suspected FGR experience catch-up growth, which has been shown to yield higher levels of BMI/adiposity, leptin and insulin-like growth factor 1 [40, 41] which are known to influence the gonadotropin (GnRH) system and have direct gonadal effects [42, 43]; thus impacting the onset of menarche.

**Table 5** Results from linear regression analyses for the associations between preterm birth status and age at events related to menarche and menopause

	Preterm birth $\beta$ (SE) N = 2,042	Full term $\beta$ (SE) N = 84,883	P
<i>Menarche-related</i>			
Age at first regular period			
Unadjusted (n=72,616)	-0.037 (0.02)	Ref	0.17
Adj. for demographics (n=79,796)	-0.024 (0.03)	Ref	0.36
Adj. for demographic and lifestyle factors (n=61,348)	-0.022 (0.03)	Ref	0.43
Age at menarche			
Unadjusted (n=86,575)	-0.055 (0.02)	Ref	0.02
Adj. for demographics (n=83,156)	-0.026 (0.02)	Ref	0.28
Adj. for demographic and lifestyle factors (n=72,719)	-0.031 (0.03)	Ref	0.23
<i>Reproductive window</i>			
Reproductive window (years)			
Unadjusted (n=60,412)	-0.629 (0.16)	Ref	< 0.0001
Adj. for demographics (n=58,165)	-0.532 (0.17)	Ref	0.001
Adj. for demographic and lifestyle factors (n=51,037)	-0.418 (0.17)	Ref	0.006
<i>Menopause-related</i>			
Age at last regular period			
Unadjusted (n=78,268)	-0.624 (0.16)	Ref	< 0.0001
Adj. for demographics (n=75,352)	-0.446 (0.16)	Ref	0.005
Adj. for demographic and lifestyle factors (n=66,082)	-0.397 (0.17)	Ref	0.02
Age at last vaginal bleeding			
Unadjusted (n=79,664)	-0.746 (0.17)	Ref	< 0.0001
Adj. for demographics (n=76,671)	-0.533 (0.17)	Ref	0.002
Adj. for demographic and lifestyle factors (n=67,194)	-0.435 (0.18)	Ref	0.02
Age at natural menopause			
Unadjusted (n=68,889)	-0.682 (0.15)	Ref	< 0.0001
Adj. for demographics (n=66,291)	-0.531 (0.15)	Ref	0.0004
Adj. for demographic and lifestyle factors (n=58,084)	-0.506 (0.16)	Ref	0.001
Age at natural menopause (conservative)			
Unadjusted (n=60,487)	-0.681 (0.16)	Ref	< 0.0001
Adj. for demographics (n=58,234)	-0.543 (0.16)	Ref	0.0008
Adj. for demographic and lifestyle factors (n=51,092)	-0.493 (0.17)	Ref	0.004

Results presented as beta (standard error). Demographic factors include age, race, ethnicity, region, and BMI. Lifestyle factors include smoking status, education, normalized socioeconomic status (NSES), and alcohol use. For the age at natural menopause analyses, participants were removed if they reported: having a bilateral oophorectomy prior to menopause; having an oophorectomy prior to menopause but did not know if it was unilateral or bilateral; or if they had an unknown oophorectomy status. For the conservative age at natural menopause, participants were also removed if they reported having a hysterectomy prior to menopause or had an unknown hysterectomy status

Birthweight and preterm birth may also affect menopausal onset through mechanisms associated with fetal/intrauterine growth restriction. Determinants of the age at menopause include both the size of the ovarian follicle pool at birth and the rate of atresia [44]. In addition to its effect on the HPG axis, suboptimal *in utero* conditions may affect the formation of the initial cohort of ovarian follicles and fetal oocyte atresia [44, 45], leading to premature ovarian insufficiency [16] and, thereby, influencing the timing of menopause. Several animal studies have demonstrated that exposure to IUGR and low birth weight results in poorer ovarian volume and/or function [46–49], further supporting the biologic mechanism(s)

by which low birth weight and/or preterm birth negatively impact age at menopause.

Our analyses were strengthened by our large sample size (>76,000) and by the availability of a multitude of covariates to include in models such as race, socioeconomic status, BMI, and ethnicity. We were also able to exclude those born preterm from birthweight analyses and perform sensitivity analyses for models examining associations with preterm birth by stratifying the results by an individual's birthweight.

It is somewhat difficult to apply our findings related to preterm birth to infants born today. Survival of infants born preterm is drastically improved in recent decades as a result of advancements in medical technology and

**Table 6** Results from logistic regression analyses for the associations between preterm birth status and events related to menarche and menopause

	Preterm birth OR (95% CI) N = 2,042	Full Term birth OR (95% CI) N = 84,815	P
<i>Menarche-related</i>			
Were periods regular			
Unadjusted (n=86,407)	0.79 (0.71-0.88)	1.00 (Ref)	< 0.0001
Adj. for demographics (n=82,992)	0.82 (0.73-0.91)	1.00 (Ref)	0.0003
Adj. for demographic and lifestyle factors (n=72,581)	0.81 (0.72-0.92)	1.00 (Ref)	0.0007
<i>Menopause-related</i>			
Ever had premenopausal hot flashes			
Unadjusted (n=86,857)	0.93 (0.82-1.04)	1.00 (Ref)	0.18
Adj. for demographics (n=83,418)	0.94 (0.83-1.05)	1.00 (Ref)	0.27
Adj. for demographic and lifestyle factors (n=72,898)	0.96 (0.85-1.09)	1.00 (Ref)	0.52
Ever had postmenopausal hot flashes			
Unadjusted (n=58,721)	1.10 (0.99-1.23)	1.00 (Ref)	0.08
Adj. for demographics (n=56,411)	1.04 (0.93-1.17)	1.00 (Ref)	0.45
Adj. for demographic and lifestyle factors (n=49,326)	1.05 (0.93-1.18)	1.00 (Ref)	0.47
Ever had an oophorectomy			
Unadjusted (n=85,769)	1.14 (1.03-1.25)	1.00 (Ref)	0.009
Adj. for demographics (n=82,409)	1.15 (1.05-1.27)	1.00 (Ref)	0.004
Adj. for demographic and lifestyle factors (n=72,078)	1.13 (1.01-1.25)	1.00 (Ref)	0.03
Ever had a hysterectomy			
Unadjusted (n=86,849)	1.08 (0.99-1.18)	1.00 (Ref)	0.07
Adj. for demographics (n=83,414)	1.08 (0.99-1.18)	1.00 (Ref)	0.10
Adj. for demographic and lifestyle factors (n=72,850)	1.07 (0.97-1.18)	1.00 (Ref)	0.19

Results presented as odds ratio (95% confidence interval). Demographic factors include age, race, ethnicity, region, and BMI. Lifestyle factors include smoking status, education, normalized socioeconomic status (NSES), and alcohol use

pharmacologic interventions, including use of high frequency ventilators, surfactant therapy, corticosteroids, and prophylactic antibiotics, much of which was not widely used until the 1990s [50, 51]. During the 1910–1940's when women in the WHI were born, survival of infants born very or extremely preterm was very low and only those with mild prematurity (or the “healthiest”) survived [50]. This overall survival is apparent even among our sample, as the prevalence of preterm birth increases with decreasing age at enrollment (45–54 years: 3.1%; ≥75 years: 1.7%). As a result, our results may not be directly relevant to those born preterm in recent years. However, it is becoming more common to see an overall reduction in the health and quality of life in very or extremely preterm infants who survive [52]. Therefore, if true, one would expect the associations observed in this study to be stronger among those individuals who did not survive to be included in our study [53] and to be relevant to those born in the current era.

Our study includes reliance on self-report for all exposures, outcomes, and potential covariates, which could have resulted in misclassification. While having birthweight and gestational age information as quantitative measures from birth records would have been preferred, self-reported birthweight and birthweight category has

been previously validated among middle- and older-aged adults (Spearman  $r=0.67-0.85$ ) [19, 20, 54, 55], although there is demonstrated variability when stratifying by age ( $r=0.80$ , 59–69 years;  $r=0.85$ , 44–48 years) [55]; the validity of self-reported preterm birth status is unknown. However, we would expect any exposure misclassification within our study to be nondifferential and bias our results toward the null. Further, as our study participants were born in the 1910–1940's, a time during which fetal ultrasounds were not available and gestational age was estimated solely based on last menstrual period and size of the infant at birth, self-reported preterm birth exposure is prone to an unknown degree of misclassification. While all outcome variables were self-reported, we would not expect any misclassification to be differential by birthweight or preterm birth status; as such, any bias introduced would be toward the null.

Additional limitations of our study warrant consideration. While the WHI is extensively phenotyped, information on additional covariates, including maternal smoking status, postnatal growth and childhood BMI, were not available, all of which are suspected to be related to age at menarche and menopause. Because gestational age and birthweight are highly correlated, our analyses may be confounded by birthweight as we were

unable to adjust for this as a continuous variable; however, we did perform sensitivity analyses limiting preterm birth models to only those reportedly weighing <6 lbs. to limit potential confounding and misclassification by self-report. It is also possible that excluding women who did not have a natural menopause from our analyses (i.e. those with a history of oophorectomy and/or hysterectomy) may have biased our results differentially in both the birthweight and preterm birth analyses. However, inclusion of these individuals would have resulted in a lower average age at menopause and biased our results away from the null. As a result, we chose to exclude these individuals from our menopause analyses. Further, while the WHI is a diverse cohort of individuals, analyses stratified by race or ethnicity were underpowered for all non-White and Hispanic/Latinx groups. Future studies in more diverse populations are warranted.

In conclusion, we found that being born low birthweight and/or preterm was associated with an earlier age of natural menopause. This research further supports the Barker hypothesis, expanding the list of later-in-life outcomes believed to be related to *in utero* exposures. Interventions aimed at preventing prematurity and low birthweight infants may reduce the number of individuals experiencing early menopause and, subsequently, may reduce the risk of associated comorbidities. Further, individuals known to be born at lower birthweights and premature may benefit from earlier counseling and/or intervention strategies aimed at reducing their risk for outcomes associated with earlier hormonal transition periods.

## Supplementary Information

The online version contains supplementary material available at <https://doi.org/10.1186/s12905-024-03384-6>.

Supplementary Material 1

## Acknowledgements

We thank the WHI investigators and staff for their dedication and the study participants for making the program possible.

## Author contributions

CD designed the analytical strategy, performed the analyses, interpreted the findings, and helped prepare the entire manuscript. RW, LVF, JEM, LQ, and AHS helped to interpret the findings and reviewed/edited the manuscript. SWS helped design the study, interpret the findings and review/edit the manuscript. CNS: conceptualized and designed the study, supervised the analysis, interpreted the findings, and prepared the manuscript.

## Funding

The Women's Health Initiative program is funded by the National Heart, Lung, and Blood Institute, National Institutes of Health, U.S. Department of Health and Human Services through contracts HHSN268201100046C, HHSN26801100001C, HHSN268201100002C, HHSN268201100003C, HHSN268201100004C, and HHSN271201100004C.

## Data availability

Data from the Women's Health Initiative is available upon request. Requests should be made to the WHI study coordinating center (p&p@whi.org).

## Declarations

### Ethics approval and consent to participate

The study is carried out in accordance with the 1975 Helsinki Declaration guidelines and regulations. The WHI study is approved by the Institutional Review Boards at each participating recruitment site. Informed consent was obtained from all study participants, which were approved by the Institutional Review Boards at each participating recruitment site.

### Consent for publication

Not applicable.

### Competing interests

The authors declare no competing interests.

### Author details

<sup>1</sup>Department of Biostatistics and Epidemiology, University of Massachusetts-Amherst, 715 North Pleasant Street, Amherst, MA 01003, USA

<sup>2</sup>Department of Epidemiology and Biostatistics, Mel and Enid Zuckerman College of Public Health, University of Arizona, 1295 N. Martin Ave., Tucson, AZ 85724, USA

<sup>3</sup>Department of Epidemiology, Harvard T.H. Chan School of Public Health, Boston, MA, USA

<sup>4</sup>Division of Preventive Medicine, Department of Medicine, Brigham and Women's Hospital and Harvard Medical School, 900 Commonwealth Ave., Boston, MA 02215, USA

<sup>5</sup>Department of Public Health Sciences, The University of California Davis, One Shields Ave., Med-Sci 1C Room 145, Davis, CA 95616, USA

<sup>6</sup>Herbert Wertheim School of Public Health and Human Longevity Science, University of California, 9500 Gilman Drive #0725, San Diego, La Jolla, CA 92093, USA

<sup>7</sup>Department of Epidemiology and Population Health, Albert Einstein College of Medicine, Bronx, NY 10461, USA

Received: 6 December 2023 / Accepted: 23 September 2024

Published online: 03 October 2024

## References

1. Forman MR, Mangini LD, Thelus-Jean R, Hayward MD. Life-course origins of the ages at menarche and menopause. *Adolesc Health Med Ther*. 2013;4:1–21.
2. Barker DJ. The origins of the developmental origins theory. *J Intern Med*. 2007;261(5):412–7.
3. Monahan B, Farland LV, Shadyab AH, Hankinson SE, Manson JE, Spracklen CN. Birthweight and subsequent risk for thyroid and autoimmune conditions in postmenopausal women. *J Dev Orig Health Dis*. 2022;13(4):463–70.
4. Ryckman KK, Rillamas-Sun E, Spracklen CN, Wallace RB, Garcia L, Tylavsky FA, et al. Ethnic differences in the relationship between birth weight and type 2 diabetes mellitus in postmenopausal women. *Diabetes Metab*. 2014;40(5):379–85.
5. Smith CJ, Ryckman KK, Barnabei VM, Howard BV, Isasi CR, Sarto GE, et al. The impact of birth weight on cardiovascular disease risk in the women's Health Initiative. *Nutr Metab Cardiovasc Dis*. 2016;26(3):239–45.
6. Spracklen CN, Ryckman KK, Robinson JG, Stefanick ML, Sarto GE, Anton SD, Wallace RB. Low Birth Weight and Risk of later-Life Physical disability in women. *J Gerontol Biol Sci Med Sci*. 2017;72(4):543–7.
7. Spracklen CN, Wallace RB, Sealy-Jefferson S, Robinson JG, Freudenheim JL, Wellons MF, et al. Birth weight and subsequent risk of cancer. *Cancer Epidemiol*. 2014;38(5):538–43.
8. Juul F, Chang VW, Brar P, Parekh N. Birth weight, early life weight gain and age at menarche: a systematic review of longitudinal studies. *Obes Rev*. 2017;18(11):1272–88.

9. Bjelland EK, Gran JM, Hofvind S, Eskild A. The association of birthweight with age at natural menopause: a population study of women in Norway. *Int J Epidemiol*. 2020;49(2):528–36.
10. Cresswell JL, Egger P, Fall CH, Osmond C, Fraser RB, Barker DJ. Is the age of menopause determined in-utero? *Early Hum Dev*. 1997;49(2):143–8.
11. Steiner AZ, D'Aloisio AA, DeRo LA, Sandler DP, Baird DD. Association of intra-uterine and early-life exposures with age at menopause in the Sister Study. *Am J Epidemiol*. 2010;172(2):140–8.
12. Tom SE, Cooper R, Kuh D, Guralnik JM, Hardy R, Power C. Fetal environment and early age at natural menopause in a British birth cohort study. *Hum Reprod*. 2010;25(3):791–8.
13. Treloar SA, Sadrzadeh S, Do KA, Martin NG, Lambalk CB. Birth weight and age at menopause in Australian female twin pairs: exploration of the fetal origin hypothesis. *Hum Reprod*. 2000;15(1):55–9.
14. Meulenijzer E, Vyncke K, Labayen I, Meirhaeghe A, Béghin L, Breidenassel C, et al. Associations of early life and sociodemographic factors with menarcheal age in European adolescents. *Eur J Pediatr*. 2015;174(2):271–8.
15. Ruder EH, Hartman TJ, Rovine MJ, Dorgan JF. Birth characteristics and age at menarche: results from the dietary intervention study in children (DISC). *Cancer Causes Control*. 2010;21(9):1379–86.
16. Sydsjö G, Bladh M, Rindebom K, Hammar M, Rodriguez-Martinez H, Nedstrand E. Being born preterm or with low weight implies a risk of infertility and premature loss of ovarian function; a national register study. *Ups J Med Sci*. 2020;125(3):235–9.
17. Anderson GL, Manson J, Wallace R, Lund B, Hall D, Davis S, et al. Implementation of the women's Health Initiative study design. *Ann Epidemiol*. 2003;13(9 Suppl):S5–17.
18. Prentice RL, Anderson GL. The women's health initiative: lessons learned. *Annu Rev Public Health*. 2008;29:131–50.
19. Jaworowicz DJ, Nie J, Bonner MR, Han D, Vito D, Hutson A, et al. Agreement between self-reported birth weight and birth certificate weights. *J Dev Orig Health Dis*. 2010;1(2):106–13.
20. Troy LM, Michels KB, Hunter DJ, Spiegelman D, Manson JE, Colditz GA, et al. Self-reported birthweight and history of having been breastfed among younger women: an assessment of validity. *Int J Epidemiol*. 1996;25(1):122–7.
21. Initiative WsH. Age at menopause algorithm [ <https://www.whi.org/doc/Algorithm-Age-At-Menopause.pdf> ]
22. Dubowitz T, Ghosh-Dastidar M, Eibner C, Slaughter ME, Fernandes M, Whitsel EA, et al. The women's Health Initiative: the food environment, neighborhood socioeconomic status, BMI, and blood pressure. *Obes (Silver Spring)*. 2012;20(4):862–71.
23. Farland LV, Correia KFB, Dodge LE, Modest AM, Williams PL, Smith LH, et al. The importance of mediation in reproductive health studies. *Hum Reprod*. 2020;35(6):1262–6.
24. Romundstad PR, Vatten LJ, Nilsen TI, Holmen TL, Hsieh CC, Trichopoulos D, Stuver SO. Birth size in relation to age at menarche and adolescent body size: implications for breast cancer risk. *Int J Cancer*. 2003;105(3):400–3.
25. Karaolis-Danckert N, Buyken AE, Sonntag A, Kroke A. Birth and early life influences on the timing of puberty onset: results from the DONALD (DÖrtmund Nutritional and Anthropometric longitudinally designed) study. *Am J Clin Nutr*. 2009;90(6):1559–65.
26. Sadrzadeh S, Verschuuren M, Schoonmade LJ, Lambalk CB, Painter RC. The effect of adverse intrauterine conditions, early childhood growth and famine exposure on age at menopause: a systematic review. *J Dev Orig Health Dis*. 2018;9(2):127–36.
27. Langton CR, Whitcomb BW, Purdue-Smithe AC, Sievert LL, Hankinson SE, Manson JE, et al. Association of in Utero exposures with risk of early natural menopause. *Am J Epidemiol*. 2022;191(5):775–86.
28. James E, Wood CL, Nair H, Williams TC. Preterm birth and the timing of puberty: a systematic review. *BMC Pediatr*. 2018;18(1):3.
29. D'Aloisio AA, DeRo LA, Baird DD, Weinberg CR, Sandler DP. Prenatal and infant exposures and age at menarche. *Epidemiology*. 2013;24(2):277–84.
30. Dossus L, Kvaskoff M, Bijon A, Fervers B, Boutron-Ruault MC, Mesrine S, Clavel-Chapelon F. Determinants of age at menarche and time to menstrual cycle regularity in the French E3N cohort. *Ann Epidemiol*. 2012;22(10):723–30.
31. Hack M, Schluchter M, Cartar L, Rahman M, Cuttler L, Borawski E. Growth of very low birth weight infants to age 20 years. *Pediatrics*. 2003;112(1 Pt 1):e30–8.
32. Persson I, Ahlsson F, Ewald U, Tuvemo T, Qingyuan M, von Rosen D, Proos L. Influence of perinatal factors on the onset of puberty in boys and girls: implications for interpretation of link with risk of long term diseases. *Am J Epidemiol*. 1999;150(7):747–55.
33. Sadrzadeh S, Painter RC, van Kasteren YM, Braat DD, Lambalk CB. Premature ovarian insufficiency and perinatal parameters: a retrospective case-control study. *Maturitas*. 2017;96:72–6.
34. Calkins K, Devaskar SU. Fetal origins of adult disease. *Curr Probl Pediatr Adolesc Health Care*. 2011;41(6):158–76.
35. Hvidt JJ, Brix N, Ernst A, Lauridsen LLB, Ramlau-Hansen CH. Size at birth, infant growth, and age at pubertal development in boys and girls. *Clin Epidemiol*. 2019;11:873–83.
36. Abreu AP, Kaiser UB. Pubertal development and regulation. *Lancet Diabetes Endocrinol*. 2016;4(3):254–64.
37. Grumbach MM. The neuroendocrinology of human puberty revisited. *Horm Res*. 2002;57(Suppl 2):2–14.
38. de Boo HA, Harding JE. The developmental origins of adult disease (Barker) hypothesis. *Aust N Z J Obstet Gynaecol*. 2006;46(1):4–14.
39. Roth CL, DiVall S. Consequences of early life programming by genetic and environmental influences: a synthesis regarding pubertal timing. *Endocr Dev*. 2016;29:134–52.
40. Jaquet D, Leger J, Tabone MD, Czernichow P, Levy-Marchal C. High serum leptin concentrations during catch-up growth of children born with intra-uterine growth retardation. *J Clin Endocrinol Metab*. 1999;84(6):1949–53.
41. Stevens A, Bonshek C, Whatmore A, Butcher I, Hanson D, De Leonibus C, et al. Insights into the pathophysiology of catch-up compared with non-catch-up growth in children born small for gestational age: an integrated analysis of metabolic and transcriptomic data. *Pharmacogenomics J*. 2014;14(4):376–84.
42. Sanchez-Garrido MA, Tena-Sempere M. Metabolic control of puberty: roles of leptin and kisspeptins. *Horm Behav*. 2013;64(2):187–94.
43. Wolfe A, Divall S, Wu S. The regulation of reproductive neuroendocrine function by insulin and insulin-like growth factor-1 (IGF-1). *Front Neuroendocrinol*. 2014;35(4):558–72.
44. Broekmans FJ, Soules MR, Fauser BC. Ovarian aging: mechanisms and clinical consequences. *Endocr Rev*. 2009;30(5):465–93.
45. Depmann M, Faddy MJ, van der Schouw YT, Peeters PH, Broer SL, Kelsey TW, et al. The relationship between variation in size of the primordial follicle pool and Age at Natural Menopause. *J Clin Endocrinol Metab*. 2015;100(6):E845–51.
46. Da Silva P, Aitken RP, Rhind SM, Racey PA, Wallace JM. Impact of maternal nutrition during pregnancy on pituitary gonadotrophin gene expression and ovarian development in growth-restricted and normally grown late gestation sheep fetuses. *Reproduction*. 2002;123(6):769–77.
47. Mossa F, Carter F, Walsh SW, Kenny DA, Smith GW, Ireland JL, et al. Maternal undernutrition in cows impairs ovarian and cardiovascular systems in their offspring. *Biol Reprod*. 2013;88(4):92.
48. Pampanini V, Jahnukainen K, Sahlin L, Germani D, Puglianiello A, Cianfarani S, Söder O. Impact of uteroplacental insufficiency on ovarian follicular pool in the rat. *Reprod Biol Endocrinol*. 2019;17(1):10.
49. Stenhouse C, Cortes-Araya Y, Hogg CO, Donadeu FX, Ashworth CJ. Associations between foetal size and ovarian development in the pig. *Anim Reprod Sci*. 2020;221:106589.
50. Philip AG. The evolution of neonatology. *Pediatr Res*. 2005;58(4):799–815.
51. Swamy GK, Ostbye T, Skjaerven R. Association of preterm birth with long-term survival, reproduction, and next-generation preterm birth. *JAMA*. 2008;299(12):1429–36.
52. Stoelhorst GM, Rijken M, Martens SE, Brand R, den Ouden AL, Wit JM, Veen S. Changes in neonatology: comparison of two cohorts of very preterm infants (gestational age < 32 weeks): the Project on Preterm and Small for Gestational Age infants 1983 and the Leiden Follow-Up project on Prematurity 1996–1997. *Pediatrics*. 2005;115(2):396–405.
53. Singer D, Thiede LP, Perez A. Adults born Preterm–Long-Term Health risks of former very low Birth Weight infants. *Dtsch Arztebl Int*. 2021;118(31–32):521–7.
54. Allen DS, Ellison GT, dos Santos Silva I, De Stavola BL, Fentiman IS. Determinants of the availability and accuracy of self-reported birth weight in middle-aged and elderly women. *Am J Epidemiol*. 2002;155(4):379–84.
55. Wodskou PM, Hundrup YA, Obel EB, Jørgensen T. Validity of self-reported birthweight among middle-aged and elderly women in the Danish nurse Cohort Study. *Acta Obstet Gynecol Scand*. 2010;89(9):1134–9.

## Publisher's note

Springer Nature remains neutral with regard to jurisdictional claims in published maps and institutional affiliations.