

RESEARCH

Open Access



Risk factors for perioperative blood transfusion in patients undergoing total laparoscopic hysterectomy

Xianghua Cao¹, Xueliang Liu¹, Xingxing Zhang¹, Kefang Zhang¹, Chuan Chen², Qinfeng Yang³, Jian Wang³, Xueping Li^{1*} and Ling Wei^{4*}

Abstract

Purpose The goal is to identify risk factors associated with receiving a blood transfusion during the perioperative period in patients who undergo total laparoscopic hysterectomy (TLH) using a large-scale national database.

Methods In this retrospective analysis, data from the Nationwide Inpatient Sample (NIS) was utilized to review the medical records of all patients who underwent TLH from 2010 to 2019. The researchers identified patients who had received a blood transfusion during the perioperative period and compared with those who had not. The subsequent factors associated with blood transfusion were examined: hospital characteristics (type of admission and payer, patient demographics (age and race), bed size, teaching status, location, and region of hospital), length of stay (LOS), total charges during hospitalization, in-hospital mortality, comorbidities, and perioperative complications. The data was analyzed using descriptive statistics. The independent risk factors of perioperative blood transfusion after TLH was identified by performing multivariate logistic regression.

Results A total of 79,933 TLH were captured from the NIS database, among which 3433 (4.40%) patients received a perioperative blood transfusion. TLH patients affected by blood transfusion were 2 days longer hospital stays ($P < 0.001$), higher overall costs ($P < 0.001$), the patients who received a transfusion after a long-term hospitalization had a significantly higher rate of mortality (0.5% vs. 0.1%; $P < 0.001$). Perioperative blood transfusion after TLH was associated with chronic blood loss anemia, deficiency anemia, coagulopathy, congestive heart failure, fluid and electrolyte disorders, renal failure, metastatic cancer, sepsis, weight loss, deep vein thrombosis, gastrointestinal hemorrhage, shock, acute myocardial infarction, and pneumonia, stroke, hemorrhage, pulmonary embolism, and disease of the genitourinary system.

Conclusion Studying the risk factors of perioperative blood transfusion after TLH is advantageous in order to ensure proper management and optimize outcomes.

Keywords Blood transfusion, Total laparoscopic hysterectomy, Risk factors, Nationwide inpatient sample

*Correspondence:

Xueping Li
dhyyxueping@163.com
Ling Wei
weilin0509@163.com

Full list of author information is available at the end of the article



© The Author(s) 2024. **Open Access** This article is licensed under a Creative Commons Attribution 4.0 International License, which permits use, sharing, adaptation, distribution and reproduction in any medium or format, as long as you give appropriate credit to the original author(s) and the source, provide a link to the Creative Commons licence, and indicate if changes were made. The images or other third party material in this article are included in the article's Creative Commons licence, unless indicated otherwise in a credit line to the material. If material is not included in the article's Creative Commons licence and your intended use is not permitted by statutory regulation or exceeds the permitted use, you will need to obtain permission directly from the copyright holder. To view a copy of this licence, visit <http://creativecommons.org/licenses/by/4.0/>. The Creative Commons Public Domain Dedication waiver (<http://creativecommons.org/publicdomain/zero/1.0/>) applies to the data made available in this article, unless otherwise stated in a credit line to the data.

Introduction

Hysterectomy is a commonly performed surgical procedure [1]. There are over 600,000 procedures conducted annually in the United States [2]. Laparoscopic hysterectomy (LH) has gained significant recognition as a favorable method of hysterectomy due to its link to relatively low rates of complications after surgery, minimal bleeding, have a brief hospitalization, and swiftly resume their regular activities [3, 4]. Although total laparoscopic hysterectomy (TLH) is generally safe, like any other surgical procedure, there is a potential risk of complications. It is worth mentioning that blood transfusions are commonly performed during surgeries. Although safety measures are in place nowadays, blood transfusions still carry risks, including acute reactions, medical mistakes, and the potential for viral or bacterial infections [5, 6]. Therefore, it is crucial to develop a strategy before surgery to prevent the need for perioperative blood transfusions in patients undergoing the TLH.

In recent years, several studies have reported some transfusion risk factors during hysterectomy. In a retrospective study, 517 patients were identified and included, revealing that 47 (9.09%) individuals received a blood transfusion during the perioperative period. It was discovered that pelvic adhesion increased the risk of receiving a blood transfusion for those undergoing TLH [5]. Another study discovered that patients who had a larger uterus, a greater estimated blood loss during the procedure, and had a longer operative time were found to be more prone to receiving a blood transfusion [7]. Early identification of patients at risk of requiring perioperative blood transfusions is widely recognized as a means to improve patient counseling, surgical preparation and blood protection, reduce blood transfusions related complications and effectively improve perioperative prognosis. However, until now, there is no study investigating the factors that increase the odds of requiring a blood transfusion undergoing TLH based on a large-scale sample database.

Consequently, we conducted a study aiming to detect the factors that increase the likelihood of perioperative blood transfusions in patients undergoing TLH using the Nationwide Inpatient Sample (NIS) database. We analyzed various factors that are related, such as patient demographics (age and race), characteristics of the hospital (type of admission and payer, bed size, teaching status, location, and region), length of stay (LOS), total charges during hospitalization, in-hospital mortality, comorbidities, and perioperative complications.

Materials and methods

Database

The most comprehensive all-payer healthcare database for inpatient hospital stays in the United States is the NIS database [8]. The NIS comprises hospital-discharge data at the patient level, provided by states participating in the Healthcare Cost and Utilization Project sponsored by the Agency for Healthcare Research and Quality [6, 9]. The NIS contains data elements regarding demographics, medical ailments, treatments, duration of hospitalization, and expenses [10].

TLH procedure

A hysterectomy is the surgical removal of a woman's uterus, and it is the frequently performed surgery solely in women [11]. A hysterectomy is typical usually performed in those with adenomyosis, leiomyoma, uterine prolapse, malignancy, and chronic bleeding [12]. Hysterectomy is generally carried out via the following three conventional approaches: abdominal, vaginal, and laparoscopic. In recent years, minimally invasive surgery has received more attention from surgeons because of increasing concerns regarding cosmetic outcomes of surgery [13]. TLH is performed with the intention of making abdominal hysterectomy a laparoscopic surgery [14]. Depending on the size of the uterus, a veress needle was placed either supraumbilically or through the umbilicus, and CO₂ was then inhaled into the abdomen. Following the installation of the videolaparoscope and pneumoperitoneum, three suprapubic cannulas were inserted. After the procedure, a laparoscopy was used to reassess the pelvis and abdomen in order to perform pelvic lavage and ensure hemostasis [15]. Most studies set the indications for TLH as: usually less than 20 weeks' gestation (below the navel level) [15], and no fertility requirement of adenomyosis, uterine fibroids, early endometrial cancer, etc. The uterus is enlarged beyond the umbilicus, severe cardiovascular disease, excessive obesity and severe uterine adhesions should be considered a contraindication for TLH. Depending on the size and position of the myomas, excessively enlarged uteri may limit access to the uterine vascular pedicles. They may also increase the risk of problems such bleeding, bowel and urine damage from inadequate exposure, difficulties removing the uterus, and prolonged surgery [15]. At present, most studies have modified the surgical methods to reduce the complications after TLH [16–18]. TLH is a Class 4 procedure that requires qualified physicians to perform the operation.

Study population

We conducted a retrospective analysis of individuals who had undergone TLH surgery from 2010 to 2019. We

detected cases of TLH based on the occurrence of the ICD-9-CM procedure code 68.41, 68.61, and the ICD-10-CM procedure code 0UB94ZX /0UB94ZZ /0UB98ZX /0UB98ZZ /0UC94ZZ /0UC98ZZ/0UPD40Z /0UPD41Z /0UPD43Z/ 0UPD47Z /0UPD4CZ /0UPD4DZ /0UPD4HZ /0UPD4JZ /0UPD4KZ /0UPD80Z /0UPD81Z /0UPD83Z /0UPD87Z /0UPD8CZ /0UPD8DZ /0UPD8HZ /0UPD8JZ /0UPD8KZ/0UT94ZZ /0UT98ZZ /0UT9FZZ. Most of the missing values in this study were based on patient characteristics in the NIS database, and there were almost no missing data on comorbidities and complications, and any missing data were excluded in this study (Fig. 1). Patients younger than 18 years were also excluded. A total of 78,896 unique patients were included in the study. Because this study relied on data that is accessible to the public, institutional review board approval was deemed unnecessary, as stated in the Tri-Council Policy statement (2010).

Outcomes

Covariates in the statistical models consisted of factors such as patient demographics, hospital characteristics, patient comorbidities, and postoperative complications, all of which were associated with blood transfusions. In

our study, about 20% of records did not include information about the patients race and/or ethnicity. Because some states do not document the race variable on the discharge records to protect patient confidentiality [10]. In order to deal with this problem, we implemented a new category called “others” to record the racial information of these patients. The categorization of insurance status included options such as Medicare, Medicaid, private insurance, lack of insurance, or other. Hospital attributes consisted of geographical region, bed count, teaching status, and whether it was located in an urban or rural area. The presence of 29 different comorbidities was identified by classifying them using the Agency for Healthcare Research and Quality Comorbidity Software, version 3.7. The aforementioned comorbidities are flagged in this software using ICD-9-CM and ICD-10-CM diagnosis codes.

Statistical analysis

We began by examining the data distribution and calculating the basic descriptive statistics for all the variables included in the analysis. Afterwards, the continuous variable data were compared using a T-test, while the categorical data were compared using either χ^2 test or Fisher

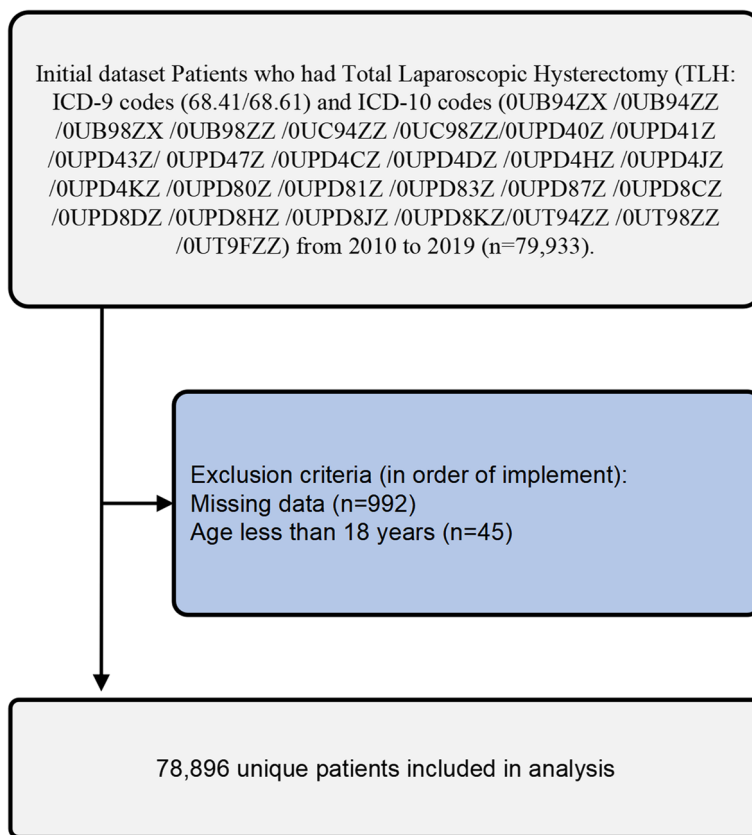


Fig. 1 Flow and inclusion/exclusion of all patients had TLH

exact test. To identify the factors that independently predict blood transfusion after TLH, we conducted univariate and multivariate regression analyses. In order to evaluate the impact of various pre-surgery factors on the requirement for blood transfusions, we computed the adjusted odds ratio. These factors included patient characteristics like age, race, and teaching status of hospitals, as well as patient comorbidities and concurrent operations such as wound infection, hemorrhage, and pulmonary embolism. We used SPSS 25 (IBM, USA) to carry out all statistical analyses on the NIS database. A *P*-value less than 0.05 was considered statistically significant.

Results

Transfusion trends

Patient demographics, hospital characteristics, and comorbidities are among the categories of variables outlined in Table 1. Patient characteristics and outcomes were showed Table 2. During the period from 2010 to 2019, a total of 79,933 patients in the United States underwent TLH. Of which, 78,896 were identified and included in the analysis (Fig. 1). Out of a total of 3433 patients, 4.40% underwent a blood transfusion during the perioperative period. The blood transfusions rates varied between 2.8% in 2010 and 5.6% in 2019 (Fig. 2). There was a slight yearly increase in the rate of blood transfusions.

Demographics

Both groups were no difference in terms of location of hospital (Table 2); In contrast, the blood transfusion group had a notably higher number of patients for all the analyzed patient characteristics and outcomes. TLH patients affected by blood transfusion were 1 year younger (47 years vs. 48 years, *P* < 0.001) (Table 2); TLH patients affected by blood transfusions were 2 days longer hospital stays (3 days vs. 1 day, *P* < 0.001) (Table 2), and higher overall costs (\$58,766 vs. \$40,922, *P* < 0.001) (Table 2); Patients with blood transfusions are less likely

to have elective admissions (60.9% vs. 88.2%, *P* < 0.001). (Table 2); Additionally, blood transfusions after TLH tended to occur in non-teaching hospital (70.2% vs. 67.9%, *P* < 0.001) and people with comorbidities (*P* < 0.001) (Table 2). As expected, in-hospital mortality of patients with transfusions after TLH was significantly higher, exceeding five times than patients with no transfusion (0.5% vs. 0.1%; *P* < 0.001) (Table 2).

Factors that increase the likelihood of experiencing a blood transfusion following TLH

A logistic regression analysis was conducted in order to determine the risk factors associated with transfusion post TLH (as seen in Table S1). The following factors were identified: race of black (odds ratio [OR]=2.00; CI=1.83–2.20), race of hispanic (OR=1.31; CI=1.17–1.46), race of Aisan of pacific islander (OR=2.75; CI=2.35–3.21) (Table 3 and Fig. 3); 1 of comorbidity (OR=1.78; CI=1.61–1.98), 2 of comorbidity (OR=1.85; CI=1.65–2.08), 3 of comorbidity (OR=2.96; CI=2.66–3.29) (Table S1 and Fig. 3); medicaid type of insurance (OR=1.35; CI=1.16–1.57), self-pay type of insurance (OR=2.09; CI=1.70–2.57), no charge type of insurance (OR=2.00; CI=1.36–2.93) (Table 3 and Fig. 3); The south region of the hospital (OR=1.37, CI=1.24–1.52) and undergoing total laparoscopic hysterectomy were identified as independent risk factors for perioperative blood transfusions (*P* < 0.001). (Table S1 and Fig. 3).

Comorbidities associated with blood transfusion following TLH

Regarding the indications for blood transfusion, the probability of perioperative blood transfusion during TLH is relatively low. However, the analysis of a single variable indicated that patients who had deficiency anemia, chronic blood loss anemia, congestive heart failure, coagulopathy, depression, fluid and electrolyte disorders, metastatic cancer, pulmonary circulation disorders,

Table 1 Variables used in binary logistic regression analysis

Variables Categories	Specific Variables
Patient demographics	Age (≤64 years and ≥ 65 years), race (White, Black, Hispanic, Asian or Pacific Islander, Native American and Other)
Hospital characteristics	Type of admission (non-elective, elective), bed size of hospital (small, medium, large), teaching status of hospital (nonteaching, teaching), location of hospital (rural, urban), type of insurance (Medicare, Medicaid, private insurance, self-pay, no charge, other), location of the hospital (northeast, Midwest or north central, south, west)
Comorbidities	AIDS, alcohol abuse, deficiency anemia, rheumatoid diseases, chronic blood loss anemia, congestive heart failure, chronic pulmonary disease, coagulopathy, depression, diabetes (uncomplicated), diabetes (with chronic complications), drug abuse, hypertension, hypothyroidism, liver disease, lymphoma, fluid and electrolyte disorders, metastatic cancer, neurological disorders, obesity, paralysis, peripheral vascular disorders, psychoses, pulmonary circulation disorders, renal failure, solid tumor without metastasis, peptic ulcer disease, valvular disease and weight loss

AIDS Acquired immunodeficiency syndrome

Table 2 Patient characteristics and outcomes after total laparoscopic hysterectomy (2010–2019)

Characteristics	Transfusion	No Transfusion	P
Total (n = count)	3433	75,463	
Total incidence (%)	4.40		
Age (median, years)	47 (41–57)	48 (42–61)	<0.001
Age group n (%)			
18–44	1398 (40.7)	26,835 (35.60)	<0.001
45–64	1457 (42.40)	34,467 (45.70)	
65–74	330 (9.6)	9653 (12.8)	
≥75	248 (7.2)	4508 (6.0)	
Race n (%)			
White	1531 (44.60)	45,540 (60.30)	<0.001
Black	827 (24.10)	9538 (12.60)	
Hispanic	536 (15.60)	9930 (13.20)	
Asian or Pacific Islander	214 (6.20)	2496(3.30)	
Native American	12 (0.30)	369 (0.50)	
Other	313 (9.1)	7590 (10.1)	
Number of Comorbidity n (%)			
0	683 (19.90)	25,212 (33.40)	<0.001
1	950 (27.70)	20,453 (27.10)	
2	643 (18.70)	13,851 (18.40)	
≥3	1157 (33.70)	15,947 (21.10)	
LOS (median, d)	3 (2–5)	1 (1–2)	<0.001
TOTCHG (median, \$)	58,766 (38,001–95,386)	40,922 (26,374–61,993)	<0.001
Type of insure n (%)			
Medicare	686 (20.00)	16,032 (21.20)	<0.001
Medicaid	663 (19.30)	10,080 (13.40)	
Private insurance	1769 (51.50)	44,860 (59.40)	
Self-pay	192 (5.60)	1676 (2.20)	
No charge	35 (1.00)	354 (0.50)	
Other	88 (2.60)	2461 (3.30)	
Bedsizes of hospital n (%)			
Small	468 (13.60)	9562 (12.70)	0.017
Medium	1021(29.70)	21,335 (28.30)	
Large	1944 (56.60)	44,566 (59.10)	
Elective admission n (%)	2090 (60.90)	66,550 (88.20)	<0.001
Type of hospital, teaching n (%)	2411 (70.20)	51,250 (67.90)	0.004
Location of hospital, urban n (%)	3248 (94.60)	71,643 (94.90)	0.394
Region of hospital n (%)			
Northeast	645 (18.80)	14,739 (19.50)	<0.001
Midwest or North Central	514 (15.00)	15,051(19.90)	
South	1479 (43.10)	25,270 (33.50)	
West	795 (23.20)	20,403 (27.00)	
Died n (%)	16 (0.50)	58 (0.10)	<0.001

LOS Length of stay; TOTCHE Total charge

Bedsizes assesses the number of short-term acute beds in a hospital. The hospital's bedsize category is nested within location and teaching status. The Medicare group consisted of both fee-for-service and managed care for Medicare patients, Federal health insurance for those aged 65+ and certain disabilities. The Medicaid group included both fee-for-service and managed

Table 2 (continued)

care for Medicaid patients, Joint federal-state health coverage for low-income individuals. Private insurance: Employer-based or individually purchased health plans. Self-pay: No health coverage, paying out of pocket [35]

weight loss, valvular disease, peripheral vascular disease, obesity, liver disease, or diabetes with complicated or renal failure and were undergoing TLH were at a higher risk of needing a blood transfusion during the perioperative period ($P < 0.001$) (Table S2). In multivariate analysis, deficiency anemia (OR=3.4; CI=3.06–3.71), chronic blood loss anemia (OR=7.9; CI=7.14–8.80), congestive heart failure (OR=1.7; CI=1.36–2.04), coagulopathy (OR=5.4; CI=4.53–6.34), fluid and electrolyte disorders (OR=3.1; CI=2.77–3.49), metastatic cancer (OR=1.9; CI=1.53–2.45), renal failure (OR=1.5; CI=1.26–1.84) and weight loss (OR=2.6; CI=2.05–3.36) were independent risk factors for perioperative blood transfusion during TLH ($P < 0.001$) (Table S2 and Fig. 4).

Complications associated with blood transfusion following TLH

Patients who had received blood transfusion were found to be at a higher risk of experiencing medical perioperative complications such as sepsis, acute myocardial infarction, deep vein thrombosis, gastrointestinal bleeding, shock, pneumonia, stroke, as well as surgical perioperative complications including wound infection, wound rupture, hemorrhage, pulmonary embolism, and genitourinary system diseases, when compared to patients who did not receive blood transfusion ($P < 0.001$) (Table S3). Multivariate analysis showed that in perioperative blood transfusion during TLH was independently associated with sepsis (OR=2.4; CI=1.80–3.26, $P < 0.001$), acute myocardial infarction (OR=2.1; CI=1.37–3.11, $P < 0.001$), deep vein thrombosis (OR=4.1; CI=2.88–5.79, $P < 0.001$), gastrointestinal hemorrhage (OR=4.4; CI=2.53–7.59, $P < 0.001$), shock (OR=6.6; CI=4.03–10.70, $P < 0.001$), and pneumonia (OR=2.3; CI=1.70–3.03, $P < 0.001$), stroke (OR=2.2; CI=1.33–3.80, $P = 0.003$), hemorrhage (OR=12.3; CI=10.45–14.58, $P < 0.001$), pulmonary embolism (OR=3.0; CI=2.05–4.20, $P < 0.001$), and disease of the genitourinary system (OR=2.5; CI=2.17–2.82, $P < 0.001$) (Table S3 and Fig. 5).

Discussion

We conducted a study to examine the factors that contribute to blood transfusion during hospitalization in the United States. Among the total patient population, 3433 individuals (4.40%) underwent a blood transfusion during the perioperative period. The percentage of patients receiving blood transfusion varied from 2.8% in 2010 to 5.6% in 2019 (Fig. 2). It is worth noting that the rate of

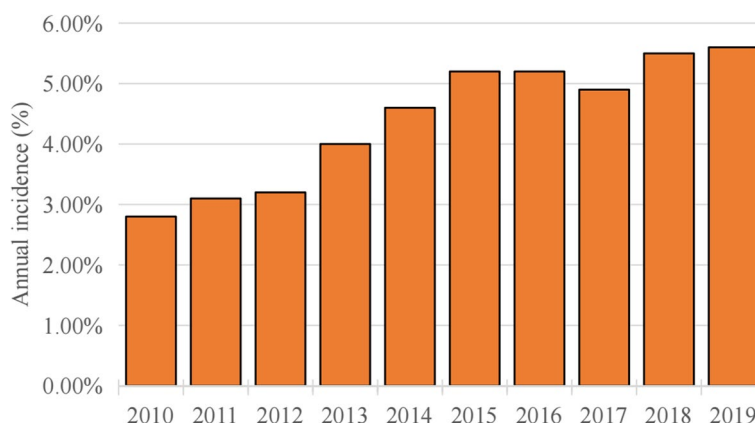


Fig. 2 Annual incidence of blood transfusion after TLH

blood transfusion showed a gradual rise over the years. This increase may be partially due to the transition from allogenic transfusion to autologous (acute normovolemic hemodilution, intraoperative and postoperative autotransfusion) with advances in blood bank screening and storage [19, 20], as evident from the rise in autologous transfusion rates over the same time period. Dilutive autotransfusion and acute hemodilution have also been recorded as blood transfusions in clinical practice. This rise in numbers could also be attributed to recent improved documentation and coding practices [6, 21]. Because previous studies had indicated that the ICD-9 codes used for tracking blood transfusions did not accurately reflect the actual usage of blood products [6, 20].

There is no study investigating the transfusion trends in TLH at a national level. From 2018 to 2019, a retrospective study analyzed 517 patients who underwent hysterectomy for benign disease at a teaching institution. The study aimed to identify risk factors associated with perioperative blood transfusion. The findings revealed an overall blood transfusion rate of 9.09% [5], indicating a higher likelihood of needing a blood transfusion in a teaching institution. That may be because the situation of patients in teaching hospitals is more serious. In our study, the variable of teaching hospitals was also included for observation. The number of the retrospective studies is relatively small, and the observation time is relatively short [5]. It is possible that our study was more convincing to detect the overall transfusion rate of TLH. One of the benefits of this study is the inclusion of both ICD-9 codes and ICD-10 codes, allowing for a comprehensive and extensive analysis of the health and economic aspects of peri-operative blood transfusion during TLH.

The risk of transfusion is influenced by factors related to demographics and hospitals, and this study's logistic regression analysis provides valuable understanding

of this correlation. As stated before, the study found that black patients are more likely to need a transfusion, which is likely attributed to the higher prevalence of anemia among this group [6, 22]. The research conducted by our team revealed notable variances in the heightened likelihood of requiring a transfusion among patients of African descent. It is important to acknowledge that urban hospitals in the Southern region of the United States have a higher likelihood of encountering complications during transfusion treatments. This disparity may be attributed to the variations in hospital standards and practices regarding transfusions, such as the criteria used to determine when a transfusion is necessary [6]. The group of no charge or self-pay might be unaffordable insurance, lower economic levels and poor health conditions (dietary iron deficiency, hemoglobinopathy, nutritional deficiencies, malaria and HIV/AIDS), which increase the need for blood transfusions [23]. Patients with comorbidities (≥ 1 of comorbidities) are more likely to require blood transfusions, especially elderly patients with other diseases. An observational study found that patients with endometrial Cancer are characterized by a high burden of comorbidities [24]. The surgical method for endometrial cancer is laparoscopic total hysterectomy. Further attention is needed to conduct study on elderly patients with other comorbidities.

Patients who have deficiency anemias, chronic anemia caused by blood loss, gastrointestinal bleeding, shock, hemorrhages, or coagulopathies are at the greatest risk of needing transfusions due to their low hemoglobin levels and tendency to bleed [5, 6]. Deficiency anemia is classified as either iron deficiency anemia, vitamin deficiency anemia (B12 or folic acid), protein deficiency anemia, or anemia of chronic disease (such as chronic kidney disease) [25]. In our study, we confirmed this with a large sample database. And, our research further found that

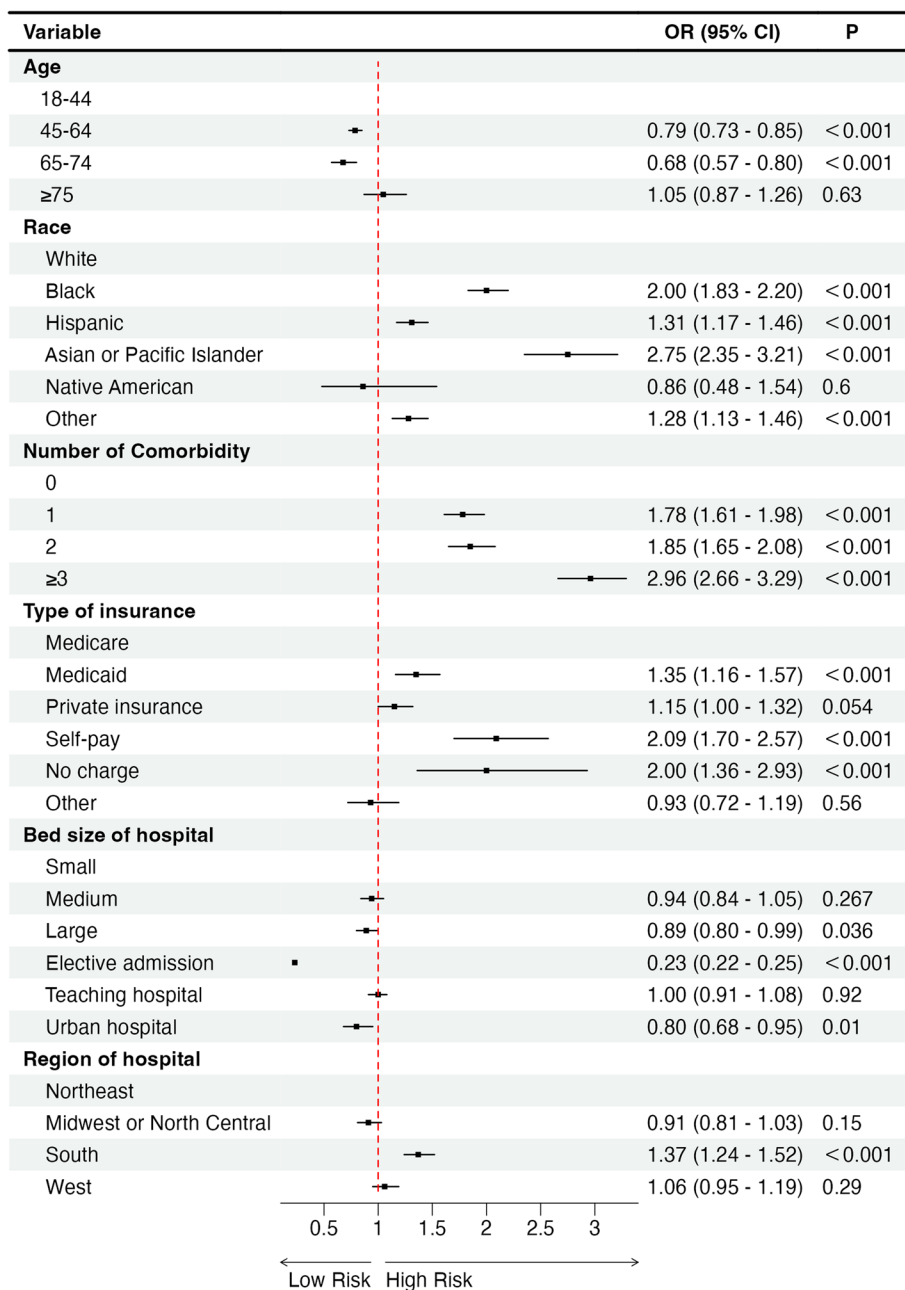


Fig. 3 Risk factors associated with blood transfusion after TLH

patients with fluid and electrolyte disorders, metastatic cancer, renal failure, or weight loss carry the highest risks of requiring transfusions probably due to the iron deficiency anemia, vitamin deficiency anemia (B12 or folic acid), protein deficiency anemia, nutrient loss or anemia of chronic disease.

In line with previous research [8, 25–28], our data analysis revealed that patients who received peri-operative blood transfusion had a more extended average

hospital stay (around 2 days longer) and increased higher hospital costs than those who did not receive transfusion. The findings of our study indicate poorer outcomes in patients who underwent blood transfusion. Nevertheless, it is uncertain whether the blood transfusions result or contribute to these unfavorable outcomes in these patients. Transfusion risk for sepsis was greater significantly than that of wound infection. Probably because sepsis is more severe, with greater

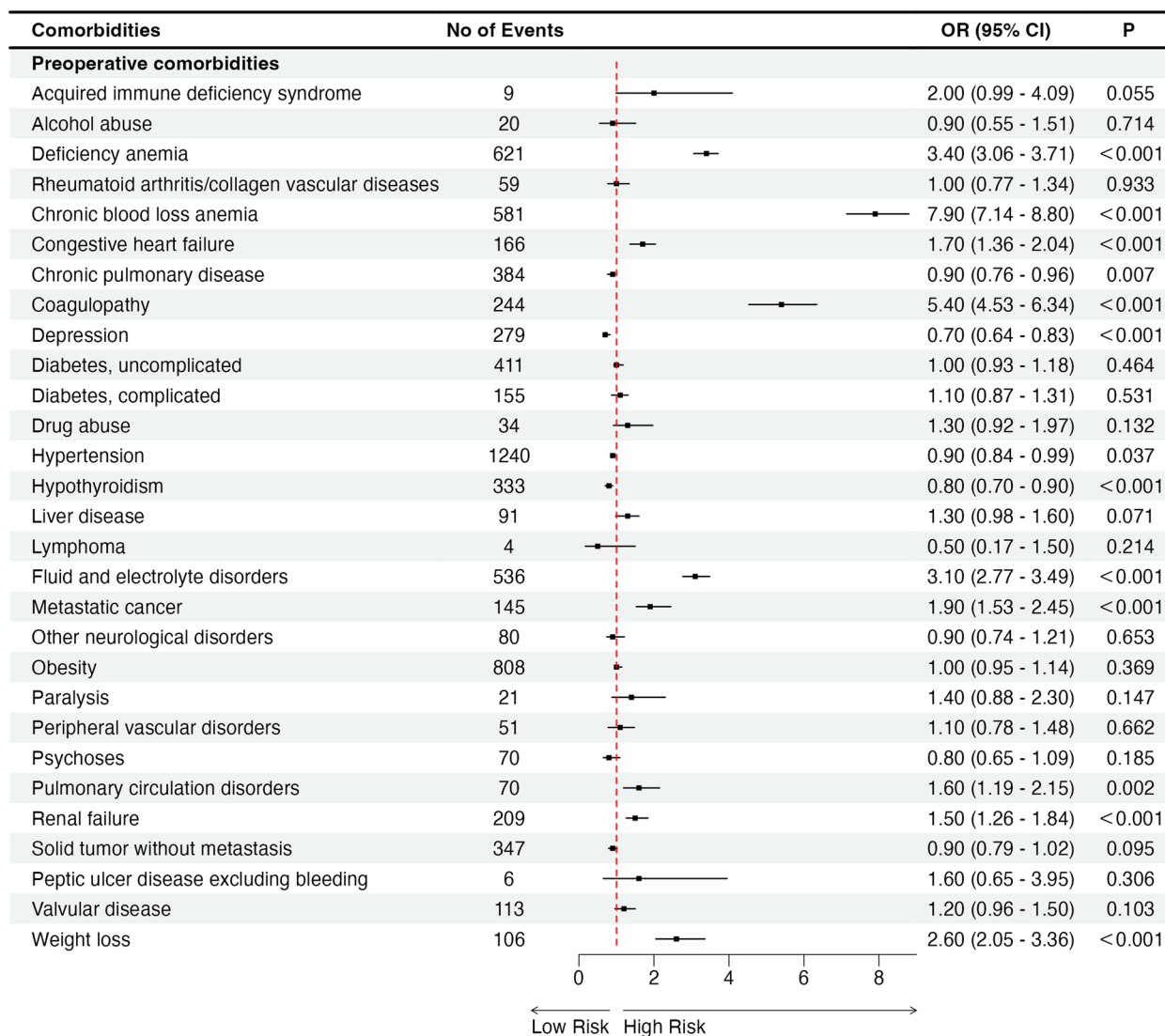


Fig. 4 Comorbidities associated with blood transfusion following TLH

circulatory dysfunction, greater susceptibility to anemia and blood transfusions. According to clinical experience, sepsis occurs after the wound becomes infected.

Multiple research studies have demonstrated a link between blood transfusion and increased rates of mortality and complications following various surgical procedures [26–33]. From 1996 to 1997, 9482 patients were prospectively evaluated on the impact of blood management funds on patients receiving allogenic blood products. According to the study’s results, these patients were found to have a higher susceptibility to infections, deep vein thrombosis, and fluid overload [33]. The research, which involved 9598 individuals diagnosed with consecutive hip fractures, revealed a 35% increased likelihood of experiencing severe

bacterial infections and a 52% increased likelihood of developing pneumonia [32].

The results of our investigation confirmed that there was an increase in both surgical and medical complications as a result of blood transfusion. Specifically, patients who underwent a blood transfusion had a significantly increased risk of developing postoperative infections, pulmonary insufficiency, pulmonary edema, and venous thromboembolism. There have been observational studies that have shown a connection between receiving a blood transfusion and experiencing a higher probability of postoperative infections, a lengthier period of time staying in the hospital, and an increased likelihood of mortality in patients who are undergoing non-cardiac surgery [34], and orthopaedic surgery [27, 32, 33].

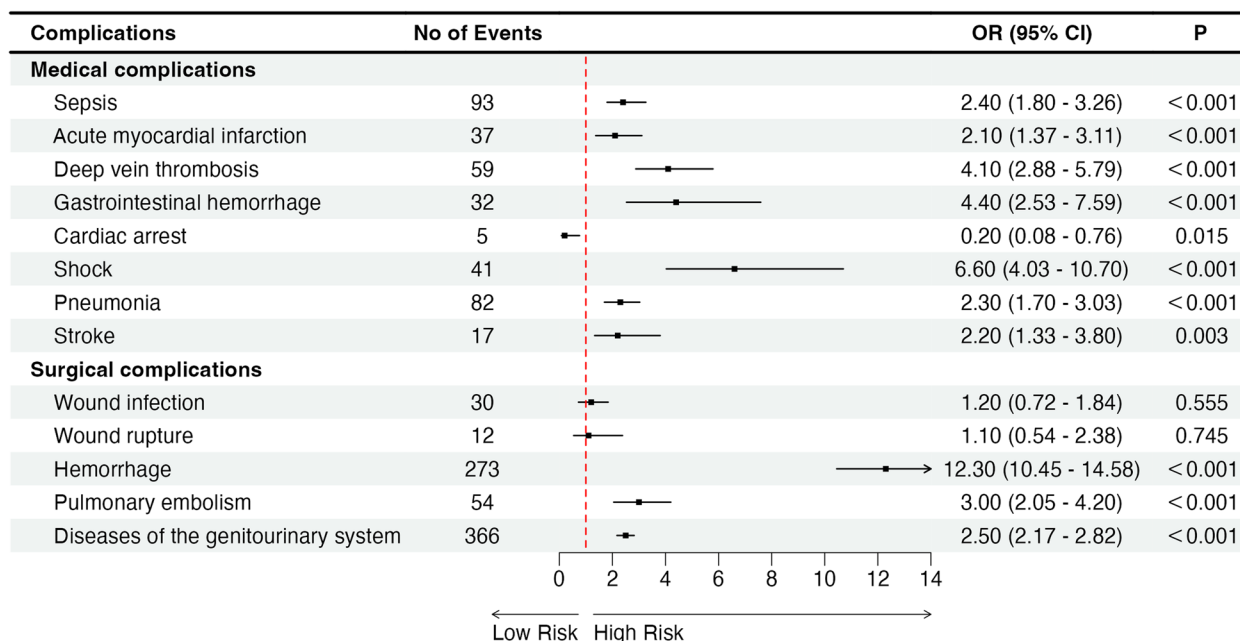


Fig. 5 Complications associated with blood transfusion following TLH

Our study found that patients who were given a transfusion had consistently higher mortality rates during their hospital stay compared to those who did not receive a transfusion.

This study’s limitations primarily stem from analyzing secondary data from extensive administrative databases. Firstly, The NIS does not include clinical information such as the type of anesthesia used, the amount of blood loss, the hemoglobin values during the perioperative period, and the quantity or volume of blood units transfused [6]. This is the weakness of this study, but this does not affect the analysis of risk factors. The NIS database has the advantage of a relatively large sample size and the data was more convincing. The results of this study provide better treatment strategies for the development of women’s health. Secondly, The NIS database is an inpatient database that only captures information on early complications during hospitalization, not variables for long-term complications after discharge. Due to the absence of outpatient follow-up, the NIS database solely captures in-patient data. Consequently, readmissions and post discharge complications such as blood transfusions cannot be documented [8]. Incomplete or incorrect coding of blood-product administration and surgical complications may occur. The accuracy of our calculations for blood transfusions depends on the precision and reliability of the codes we use. Nevertheless, it is important to provide additional information regarding the accuracy and effectiveness of these codes [6]. Thirdly, while we managed to achieve equilibrium among various groups

based on identifiable variables, we cannot fully consider hidden variables that may influence the results, which is a fundamental constraint of all observational studies. TLH was selected as the main observation variable in our study. It is not strictly defined some surgical indications (endometrial cancer, abnormal uterine bleeding, uterine intracavitary pathologies, etc). The NIS database also does not have records of surgical duration, uterine and fibroid size. There may be some degree of bias, but due to the large sample size we observed, this does not affect the results of this study. In the future, we will conduct some prospective studies to observe the incidence and specific risk factors of perioperative blood transfusion for some diseases relating to TLH. Finally, interpreting the impact of race as a risk factor for transfusion requires exercising caution, considering that approximately 20% of the data on this factor is unavailable.

Conclusion

In conclusion, the healthcare systems are worried about the increasing frequency of blood transfusions and how it affects patients undergoing TLH. Women (black, hispanic, asian or pacific islander; number of comorbidity ≥ 1 ; self-pay of insurance, no charge of insurance; south region of hospital; chronic blood loss anemia, deficiency anemia, metastatic cancer, and coagulopathy, fluid and electrolyte disorders, renal failure, weight loss; sepsis, acute myocardial infarction, deep vein thrombosis, gastrointestinal hemorrhage, shock, Pneumonia, hemorrhage, pulmonary embolism, diseases of the

genitourinary system) with higher chances of needing a perioperative blood transfusion (Fig. S1). These patients should receive appropriate counseling, blood protection method and sufficient preparation for surgery. This will help prevent unnecessary interventions during the surgical procedure.

In the future, it is necessary to conduct further large-scale, multicenter prospective studies to observe some diseases relating to TLH and long-term complications related to blood transfusion.

Abbreviations

TLH	Total laparoscopic hysterectomy
NIS	Nationwide Inpatient Sample
LOS	Length of stay
OR	Odds ratio
95% CI	95% confidence interval

Supplementary Information

The online version contains supplementary material available at <https://doi.org/10.1186/s12905-024-02908-4>.

Additional file 1: Figure S1. Overview of risk factors associated with blood transfusion after TLH

Additional file 2: Table S1. Risk factors associated with blood transfusion after TLH

Additional file 3: Table S2. Relationship between blood transfusion and preoperative comorbidities

Additional file 4: Table S3. Relationship between blood transfusion and postoperative complications

Authors' contributions

XHC, QFY, and XLL performed this study, analyzed and interpreted data; XHC, XPL, JW and QFY designed the study; XXZ, LW, CC and KFZ carried out data collection; and XHC wrote the manuscript. All authors read and approved the final manuscript.

Funding

This work was supported by the Social Development Science and Technology Project (2023) of Dongguan [grant numbers 20231800911401].

Availability of data and materials

This study is based on data provided by Nationwide Inpatient Sample (NIS) database, part of the Healthcare Cost and Utilization Project, Agency for Healthcare Research and Quality. The NIS database is a large publicly available full-payer inpatient care database in the United States and the direct web link to the database is <https://www.ahrq.gov/data/hcup/index.html>. Therefore, individual or grouped data cannot be shared by the authors.

Declarations

Ethics approval and consent to participate

Not applicable. Administrative permissions were required to access the raw data used in this study and the corresponding author's (Xueping Li) work unit (Department of Anesthesiology, Dongguan Tungwah hospital, Dongguan, China.) has already granted permission from Agency for Healthcare Research and Quality (AHRQ) to access Healthcare Cost and Utilization Project (HCUP) Nationwide Databases. However, this observational study used identified publicly available data, hence there was no requirement for consent to participate and it was deemed exempt by the ethics committee. So there is no need to grant permission in the Ethics approval and consent to participate section. What is more, the data used in this study were not need anonymized before its

use. All methods are carried out following relevant guidelines and regulations. The data used in this study were not need anonymized before its use.

Consent for publication

Not applicable.

Competing interests

The authors declare no competing interests.

Author details

¹Department of Anesthesiology, Dongguan Tungwah Hospital, Dongguan, China. ²Department of Obstetrics and Gynecology, Core Facility Center, The First Affiliated Hospital of USTC, Division of Life Sciences and Medicine, University of Science and Technology of China, Hefei 230001, Anhui, China. ³Division of Orthopaedic Surgery, Department of Orthopaedics, Nanfang Hospital, Southern Medical University, Guangzhou 510515, Guangdong, China. ⁴Nurse in Charge, Undergraduate, Nursing Department, People's Hospital of Ganzhou, Ganzhou, China.

Received: 6 November 2023 Accepted: 15 January 2024

Published online: 24 January 2024

References

- Murji A, Lam M, Allen B, et al. Risks of preoperative anemia in women undergoing elective hysterectomy and myomectomy. *Am J Obstet Gynecol.* 2019;221(6):629.e1–629.e18. <https://doi.org/10.1016/j.ajog.2019.07.018>.
- Clarke-Pearson DL, Geller EJ. Complications of hysterectomy. *Obstet Gynecol.* 2013;121(3):654–73. <https://doi.org/10.1097/AOG.0b013e3182841594>.
- Pepin KJ, Cook EF, Cohen SL. Risk of complication at the time of laparoscopic hysterectomy: a prediction model built from the National Surgical Quality Improvement Program database. *Am J Obstet Gynecol.* 2020;223(4):555.e1–7. <https://doi.org/10.1016/j.ajog.2020.03.023>.
- Butt JL, Jeffery ST, Van Der Spuy ZM. An audit of indications and complications associated with elective hysterectomy at a public service hospital in South Africa. *Int J Gynecol Obstet.* 2012;116(2):112–6. <https://doi.org/10.1016/j.ijgo.2011.09.026>.
- Saad-Naguib M, Ulker A, Timmons D, Grady M, Lederer M, Carugno J. Risk factors for perioperative blood transfusion in patients undergoing hysterectomy for benign disease in a teaching institution. *Arch Gynecol Obstet.* 2022;305(1):103–7. <https://doi.org/10.1007/s00404-021-06223-3>.
- Saleh A, Small T, Chandran Pillai ALP, Schiltz NK, Klika AK, Barsoum WK. Risk factors for perioperative blood transfusion in patients undergoing hysterectomy for benign disease in a teaching institution. *J Bone Jt Surg.* 2014;96(18):e155. <https://doi.org/10.2106/JBJS.M.00825>.
- Unger JB, Paul R, Caldito G. Hysterectomy for the Massive Leiomyomatous Uterus. *Obstet Gynecol.* 2002;100:6.
- Masoomi H, Blumenauer BJ, Blakkolb CL, Marques ES, Greives MR. Predictors of blood transfusion in autologous breast reconstruction surgery: a retrospective study using the nationwide inpatient sample database. *J Plast Reconstr Aesthet Surg.* 2019;72(10):1616–22. <https://doi.org/10.1016/j.bjps.2019.06.012>.
- Stulberg JJ, Haut ER. Practical guide to surgical data sets: healthcare cost and utilization project National Inpatient Sample (NIS). *JAMA Surg.* 2018;153(6):586. <https://doi.org/10.1001/jamasurg.2018.0542>.
- Zakhari A, Czuzoj-Shulman N, Spence AR, Gotlieb WH, Abenhaim HA. Laparoscopic and robot-assisted hysterectomy for uterine cancer: a comparison of costs and complications. *Am J Obstet Gynecol.* 2015;213(5):665.e1–7. <https://doi.org/10.1016/j.ajog.2015.07.004>.
- Hammer A, Rositch AF, Kahlert J, Gravitt PE, Blaakaer J, Søgaard M. Global epidemiology of hysterectomy: possible impact on gynecological cancer rates. *Am J Obstet Gynecol.* 2015;213(1):23–9. <https://doi.org/10.1016/j.ajog.2015.02.019>.
- Desforges JF, Carlson KJ, Nichols DH, Schiff I. Indications for hysterectomy. *N Engl J Med.* 1993;328(12):856–60. <https://doi.org/10.1056/NEJM199303253281207>.

13. Yang CY, Shen TC, Lin CL, Chang YY, Huang CC, Lin WC. Surgical outcomes of hysterectomy by transvaginal natural orifice transluminal endoscopic surgery (vNOTES) compared with laparoscopic total hysterectomy (LTH) in women with non-prolapsed and benign uterine diseases. *Taiwan J Obstet Gynecol.* 2020;59(4):565–9. <https://doi.org/10.1016/j.tjog.2020.05.016>.
14. Boike GM, Elfstrand EP, DelPriore G, Schumock D, Holley HS, Lurain JR. Laparoscopically assisted vaginal hysterectomy in a university hospital: report of 82 cases and comparison with abdominal and vaginal hysterectomy. *Am J Obstet Gynecol.* 1993;168(6):1690–701. [https://doi.org/10.1016/0002-9378\(93\)90679-D](https://doi.org/10.1016/0002-9378(93)90679-D).
15. Wattiez A, Soriano D, Fiaccavento A, et al. Total laparoscopic hysterectomy for very enlarged uteri. *J Am Assoc Gynecol Laparosc.* 2002;9(2):125–30. [https://doi.org/10.1016/S1074-3804\(05\)60119-3](https://doi.org/10.1016/S1074-3804(05)60119-3).
16. Kalkan Ü, Bakay K. A multimodal concept for vaginal cuff closure by modification of the Bakay technique in total laparoscopic hysterectomy: a randomized clinical study. *BMC Womens Health.* 2022;22(1):6. <https://doi.org/10.1186/s12905-021-01591-z>.
17. Tanaka Y, Higami S, Shiraishi M, Shiki Y. Total laparoscopic hysterectomy when there is posterior cul-de-sac obliteration: a step-by-step nerve-sparing technique. *Am J Obstet Gynecol.* 2023;229(2):178–80. <https://doi.org/10.1016/j.ajog.2023.03.033>.
18. Siedhoff MT, Louie M, Misal M, Moulder JK. Total laparoscopic hysterectomy and bilateral Salpingo-oophorectomy for a 6095-g Myomatous uterus in a patient of the Jehovah's witness faith. *J Minim Invasive Gynecol.* 2019;26(1):25–8. <https://doi.org/10.1016/j.jmig.2018.02.018>.
19. Zhou J. A review of the application of autologous blood transfusion. *Braz J Med Biol Res.* 2016;49(9):e5493. <https://doi.org/10.1590/1414-431x20165493>.
20. Segal JB, Ness PM, Powe NR. Validating billing data for RBC transfusions: a brief report. *Transfusion (Paris).* 2001;41(4):530–3. <https://doi.org/10.1046/j.1537-2995.2001.41040530.x>.
21. Romano PS, Mark DH. Bias in the Coding of Hospital Discharge Data and Its Implications for Quality Assessment. *Med Care.* 1994;32(1):81–90. <https://doi.org/10.1097/00005650-199401000-00006>.
22. Shaz BH, Zimring JC, Demmons DG, Hillyer CD. Blood donation and blood transfusion: special considerations for African Americans. *Transfus Med Rev.* 2008;22(3):202–14. <https://doi.org/10.1016/j.tmr.2008.02.006>.
23. Rambiritch V, Verburgh E, Louw VJ. Patient blood management and blood conservation – complimentary concepts and solutions for blood establishments and clinical services in South Africa and beyond. *Transfus Apher Sci.* 2021;60(4):103207. <https://doi.org/10.1016/j.transci.2021.103207>.
24. Di Donato V, D'Oria O, Giannini A, et al. Age-adjusted Charlson comorbidity index predicts survival in endometrial Cancer patients. *Gynecol Obstet Investig.* 2022;87(3–4):191–9. <https://doi.org/10.1159/000525405>.
25. Masoomi H, Rimler J, Wirth GA, Lee C, Paydar KZ, Evans GRD. Frequency and Risk Factors of Blood Transfusion in Abdominoplasty in Post-Bariatric Surgery Patients: Data from the Nationwide Inpatient Sample. *Plast Reconstr Surg.* 2015;135(5):861e–8e. <https://doi.org/10.1097/PRS.0000000000001161>.
26. Pedersen AB, Mehnert F, Overgaard S, Johnsen SP. Allogeneic blood transfusion and prognosis following total hip replacement: a population-based follow up study. *BMC Musculoskelet Disord.* 2009;10(1):167. <https://doi.org/10.1186/1471-2474-10-167>.
27. Dunne JR, Malone DL, Tracy JK, Napolitano LM. Allogenic blood transfusion in the first 24 hours after trauma is associated with increased systemic inflammatory response syndrome (SIRS) and death. *Surg Infect.* 2004;5(4):395–404. <https://doi.org/10.1089/sur.2004.5.395>.
28. Surgenor SD, Kramer RS, Olmstead EM, et al. The Association of Perioperative red Blood Cell Transfusions and Decreased Long-Term Survival after Cardiac Surgery. *Anesth Analg.* 2009;108(6):1741–6. <https://doi.org/10.1213/ane.0b013e3181a2a696>.
29. Murphy GJ, Reeves BC, Rogers CA, Rizvi SIA, Culliford L, Angelini GD. Increased mortality, postoperative morbidity, and cost after red blood cell transfusion in patients having cardiac surgery. *Circulation.* 2007;116(22):2544–52. <https://doi.org/10.1161/CIRCULATIONAHA.107.698977>.
30. Kuduvali M, Oo A, Newall N, et al. Effect of peri-operative red blood cell transfusion on 30-day and 1-year mortality following coronary artery bypass surgery. *Eur J Cardiothorac Surg.* 2005;27(4):592–8. <https://doi.org/10.1016/j.ejcts.2005.01.030>.
31. Engoren MC, Habib RH, Zacharias A, Schwann TA, Riordan CJ, Durham SJ. Effect of blood transfusion on long-term survival after cardiac operation. *Ann Thorac Surg.* 2002;74(4):1180–6. [https://doi.org/10.1016/S0003-4975\(02\)03766-9](https://doi.org/10.1016/S0003-4975(02)03766-9).
32. Carson JL, Altman DG, Duff A, et al. Risk of bacterial infection associated with allogeneic blood transfusion among patients undergoing hip fracture repair. *Transfusion (Paris).* 1999;39(7):694–700. <https://doi.org/10.1046/j.1537-2995.1999.39070694.x>.
33. Bierbaum BE, Callaghan JJ, Galante JO, Rubash HE, Tooms RE, Welch RB. An analysis of blood Management in Patients Having a Total hip or knee arthroplasty*. *J Bone Jt Surg.* 1999;81(1):2–10. <https://doi.org/10.2106/0004623-199901000-00002>.
34. Glance LG, Dick AW, Mukamel DB, et al. Association between intraoperative blood transfusion and mortality and morbidity in patients undergoing noncardiac surgery. *Anesthesiol.* 2011;114(2):283–92. <https://doi.org/10.1097/ALN.0b013e3182054d06>.
35. Eslami V, Stowers JA, Afra P, Seifi A. Primary payer status in patients with seizures: a nationwide study during 1997–2014 in the United States. *Epilepsy Res.* 2021;173:106501. <https://doi.org/10.1016/j.eplepsyres.2020.106501>.

Publisher's Note

Springer Nature remains neutral with regard to jurisdictional claims in published maps and institutional affiliations.